

## At A Glance Krishna Group A Symbol of Excellence

**Sri Krishna Estate & Construction Private Limited (SECPL)**, an unit of Krishna Group, is the most trusted and reliable name in the real estate industry in the state. Since its incorporation in the year -1995-96, Krishna Group has been giving focus on value for money, quality, excellence & satisfaction. The group has been a prominent driving force in the state's real estate sector owing to innovative design, flawless execution and quality at the core of its project. Krishna Group ventured into affordable housing under the name and style of "Krishna Garden, Krishna Dham, Krishna Enclave, Krishna Plaza, Krishna Residency, Krishna Homes, Krishna Mansion" in Bhubaneswar & "Krishna Sea Sight" in Puri. With the vision and foresight of its Managing Director Sri Pabitra Routray, the company aims to provide best homes/flats to its valued customers and committed to redefine the art of living through sustainable communities.



# "We Promise to make our world Green"



### The Project

Krishna Group now presents another magnificent address of finest living at one of its glorious architectural master piece Krishna Laxmi Arcade located in Jharapada, on the heart of the temple-city Bhubaneswar. It spreads over Ac.5.536 decimals (22105.27 Sq.Mtrs.), Krishna Laxmi Arcade, a premium housing project, offers 1BHK, 2BHK, 3BHK configurations available from 530sqft to 1425 sqft. (1BHK-90Nos- 530sqft, 2BHK- 292Nos-1250sqft, 3BHK-44Nos-1425sqft Total 426 Nos). Here a customer can get a home with qualitative materials and touch of professional workmanship with above all the marvelous architectural design which matches your taste and dignity. From designs to engineering, developments & interiors, everything has to be the highest possible standard at all times.

Think beyond. **Experience the next.**

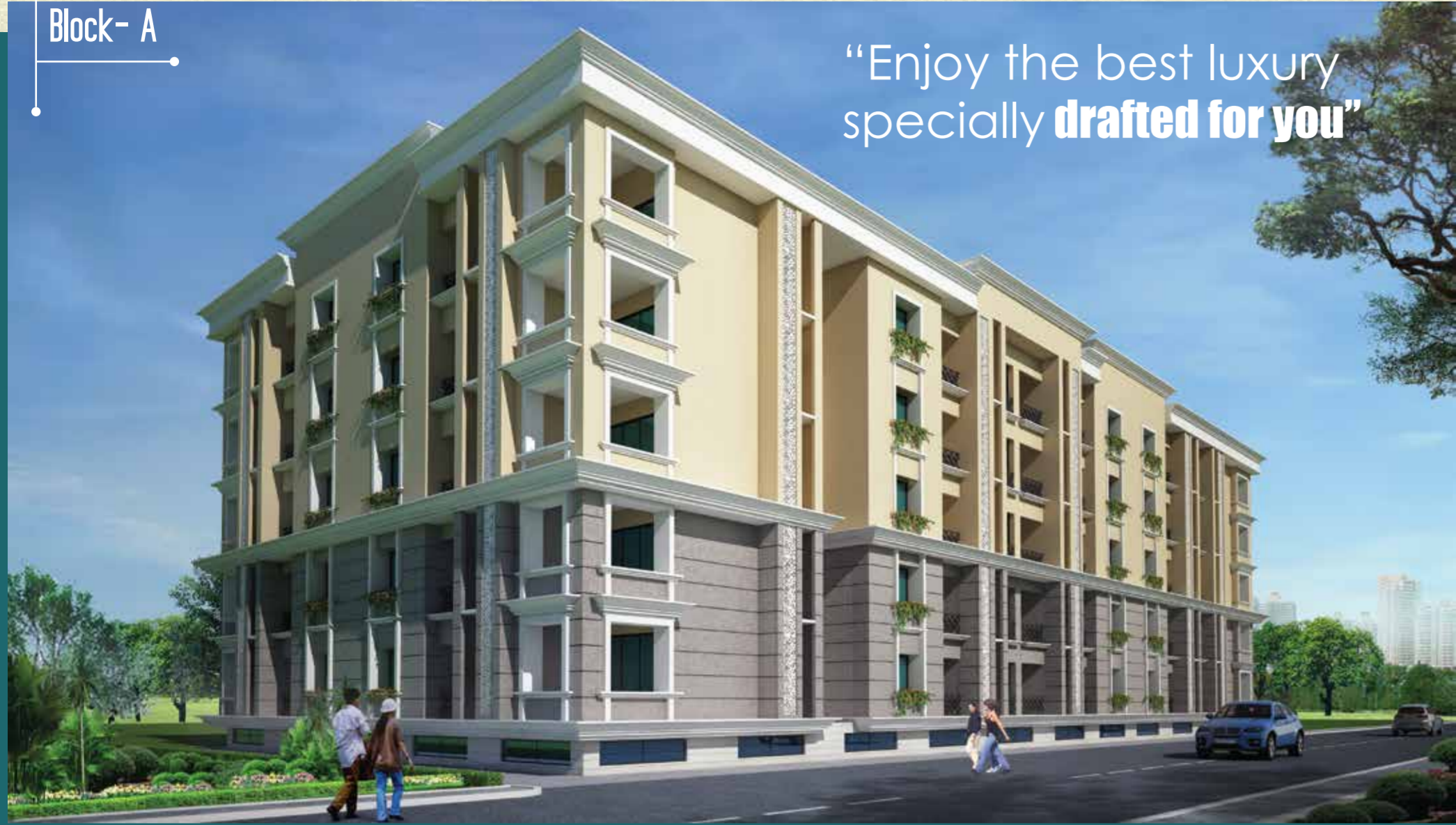
### Mission

By pioneering innovative projects and transforming perceptions of quality, Krishna Group works to challenge existing norms and standards to ultimately enriches communities and even society at large.



Block- A

“Enjoy the best luxury specially **drafted for you**”



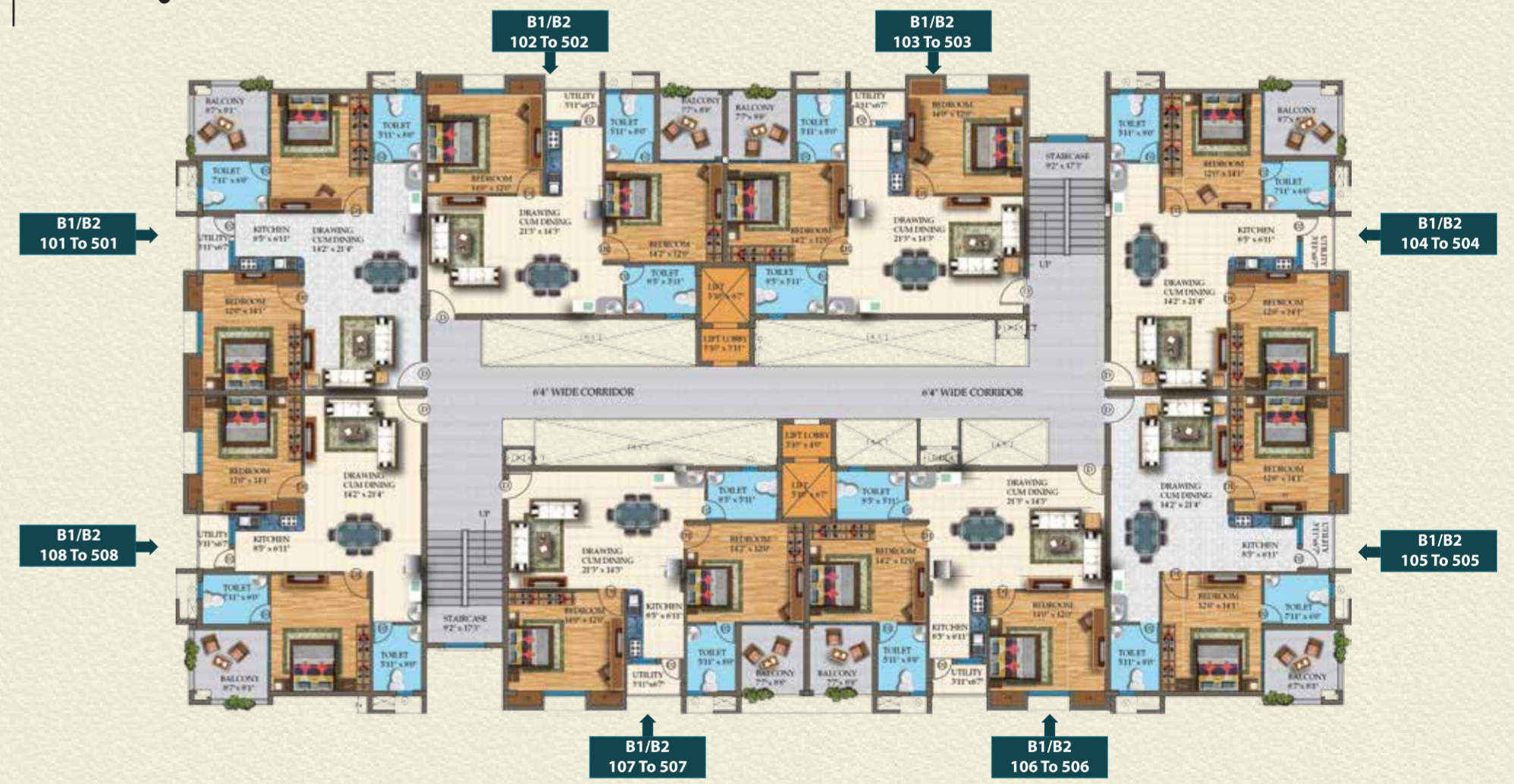
Block- B



Block- A Floor Plan



Block- B Floor Plan



BLOCK- A1/ A2/ A3/ A4 AREA STATEMENT	
FLAT NO	SUPPER BUILT-UP AREA(SFT)
A1/A2/A3/A4-101-501	1250.00
A1/A2/A3/A4-102-502	1250.00
A1/A2/A3/A4-103-503	1250.00
A1/A2/A3/A4-104-504	1250.00
A1/A2/A3/A4-105-505	1250.00
A1/A2/A3/A4-106-506	1250.00
A1/A2/A3/A4-107-507	1250.00
A1/A2/A3/A4-108-508	1250.00
A1/A2/A3/A4-109-509	1250.00
A1/A2/A3/A4-110-510	1250.00



BLOCK- B1/B2 AREA STATEMENT	
FLAT NO	SUPPER BUILT-UP AREA(SFT)
B1/B2-101-501	1250.00
B1/B2-102-502	1250.00
B1/B2-103-503	1250.00
B1/B2-104-504	1250.00
B1/B2-105-505	1250.00
B1/B2-106-506	1250.00
B1/B2-107-507	1250.00
B1/B2-108-508	1250.00

### Block- C

If you want something new,  
you have **to stop doing something old**



### Block- D



### Block- C Floor Plan



### Block- D Floor Plan



BLOCK- C1 AREA STATEMENT	
FLAT NO	SUPPER BUILT-UP AREA(SFT)
C1- 101-501	530.00
C1- 102-502	530.00
C1- 103-503	530.00
C1- 104-504	530.00
C1- 105-505	530.00
C1- 106-506	530.00
C1- 107-507	530.00
C1- 108-508	530.00
C1- 109-509	530.00

BLOCK- C1 AREA STATEMENT	
FLAT NO	SUPPER BUILT-UP AREA(SFT)
C1- 110-510	530.00
C1- 111-511	530.00
C1- 112-512	530.00
C1- 113-513	530.00
C1- 114-514	530.00
C1- 115-515	530.00
C1- 116-516	530.00
C1- 117-517	530.00
C1- 118-518	530.00



BLOCK- D1/D2 AREA STATEMENT	
FLAT NO	SUPPER BUILT-UP AREA(SFT)
D1/D2- 101-501	1425.00
D1/D2- 102-502	1425.00
D1/D2- 103-503	1425.00
D1/D2- 104-504	1425.00

Block- E



“Let the drive for perfection start from Krishna Group”



### Amenities

- Main Entrance Gate With Separate Entry & Exit
- 24X7 Security With CCTV Facilities in Common Areas
- 24x7 Water Supply From Bore Well & Municipal Supply
- DG Back up For All Common Services and 1KW for Each Flat
- STP & Adequate Numbers of Transformers
- Solar Panel for Renewable Energy
- Adequate Fire Fighting Systems
- All Internal Roads Are of 6M Wide laid With 80mm Thick Concrete Paved Blocks
- Jogging Track
- Children's Park
- Club House
- Gymnasium
- Indoor Sports Zone With Billiards & TT Banquet Hall
- Mini Home Theatre
- Multipurpose Hall for Meditation & Yoga/Aerobics
- Swimming Pool
- Rain Water Harvesting & Provision to Reuse of Treated Water for Gardening & Car Washing
- Centralized UGR With Water Line Distribution of Each Block
- Skywalk With Paradise Garden Integrated Parking Slab
- Green Pockets With Ample Plantation Through Out Landscaping Spaces

### Block- E Floor Plan



BLOCK- E1 AREA STATEMENT	
FLAT NO	SUPPER BUILT-UP AREA(SFT)
E1 - 101- 401	1150.00
E1 - 102- 402	1570.00
E1 - 103- 403	1150.00
E1 - 104- 504	1150.00



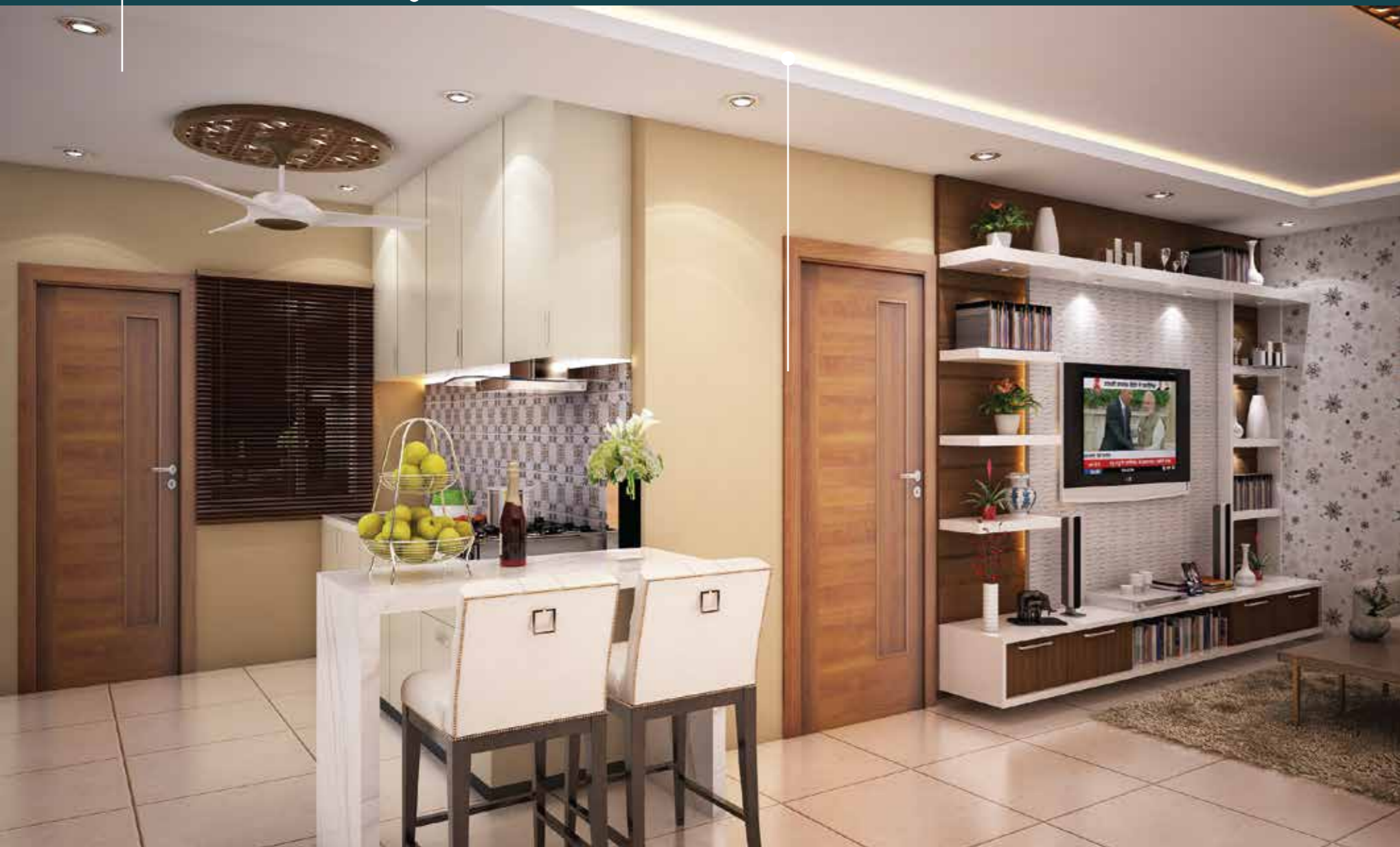
Guest Bedroom



Master Bedroom



Kitchen



Drawing





Club House



### Customer Focus

Our aim is to satisfy and to please our customers. We conduct our business in a clear and unambiguous manner. Therefore, when we embark on any project or activity, we aim to enhance the quality and lifestyles of our customers.



### World Of Krishna Group

Krishna Projects signify the start of a new era where quality needs consistency, technology meets aesthetics and passion meets perfection. of living

### Vision

Krishna Group aspires to become the most trusted and respected real estate organization.

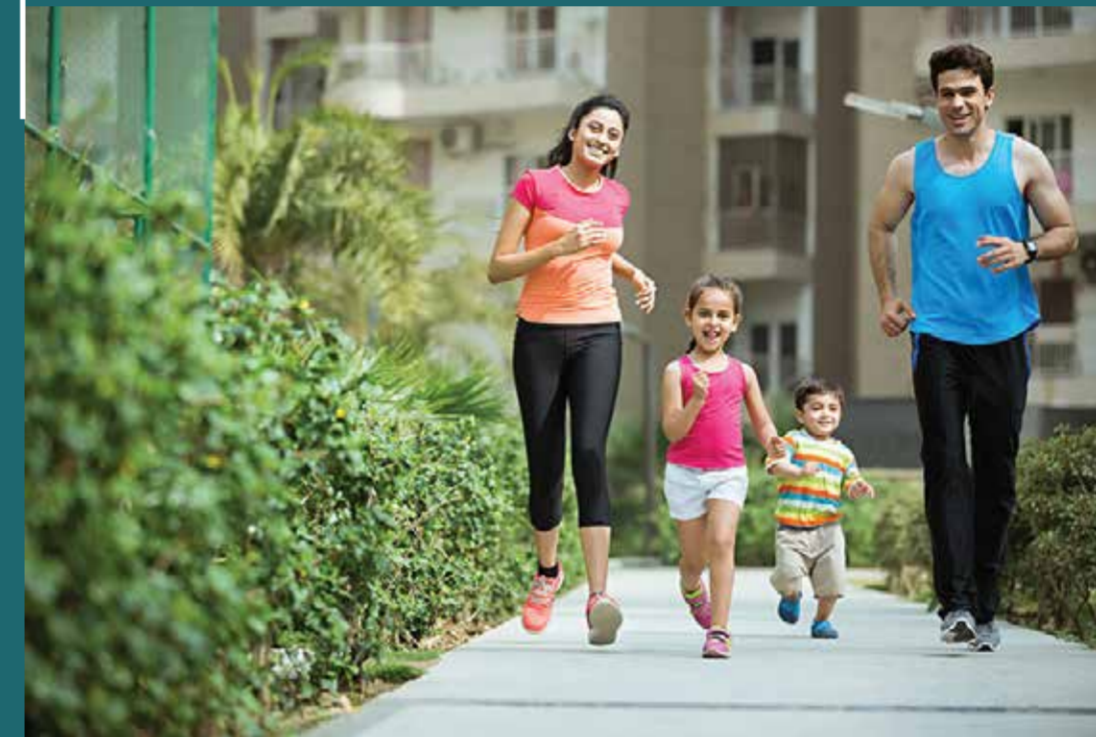


“Enjoy the best luxury **specially drafted for you**”





“**Good business leaders** create a vision, Articulate the vision, **Passionately own the vision** and relentlessly drive it to completion.”



“Good business leaders”





## Specification

### STRUCTURE

R.C.C. Frame Structure With Earthquake Resistant

### SUPER STRUCTURE

AAC Blocks & Fly Bricks

### FLOORING

Vitrified Tiles of D.V.T. Tile 2'x2' Size in All Floors in Drawing/  
Dinning/Kitchen/ Bed Rooms of & Antiskid Tiles in Toilets

### SKIRTAG/DADO

In All Rooms Skirting of 4" Height & Wall Tiles in Toilets Up to Lintel Level

### CORRIDER & FLOORING

Granite Flooring With Vitrified Tiles & 19mm Thick Granite In Staircase

### PARKING FLOORING

60mm. cement Pavers

### CHOWKHAT / DOOR FRAMES

All The Door Frames of Sal Wood Except Toilet & Kitchen Utility

### DOORS

Main Doors is Teak Wood & All Other Internal Doors are Flush Doors With Both  
Sides Laminated or Design Flush Doors

### WINDOWS

UPVC Sliding Window of 5.5mm Thick Reflecting Glass of Reputed Brands  
Without Grill Provision

### KITCHEN

Granite Kitchen Slab, Modular Kitchen With Cabinet Only Below The  
Kitchen Slab, 2' Height Wall Tiles Above Kitchen Slab

### TOILET DOORS & DOOR FRAMES

WPC Chowkath with PVC Doors

### TOILET CP FIXTURES

All The CP Fittings Are of Jaguar Make

### ELECTRICAL POINTS

Adequate Points for Lights, Calling Bell ,Fans, Exhaust Fans, AC,  
Washing Machine with Modular Switches of ROMA Make

### INTERNAL PAINTING

One Coat Putty

### EXTERNAL PAINTING

Apex Weather Coat With Texture Paint

### BALCONY RAILING

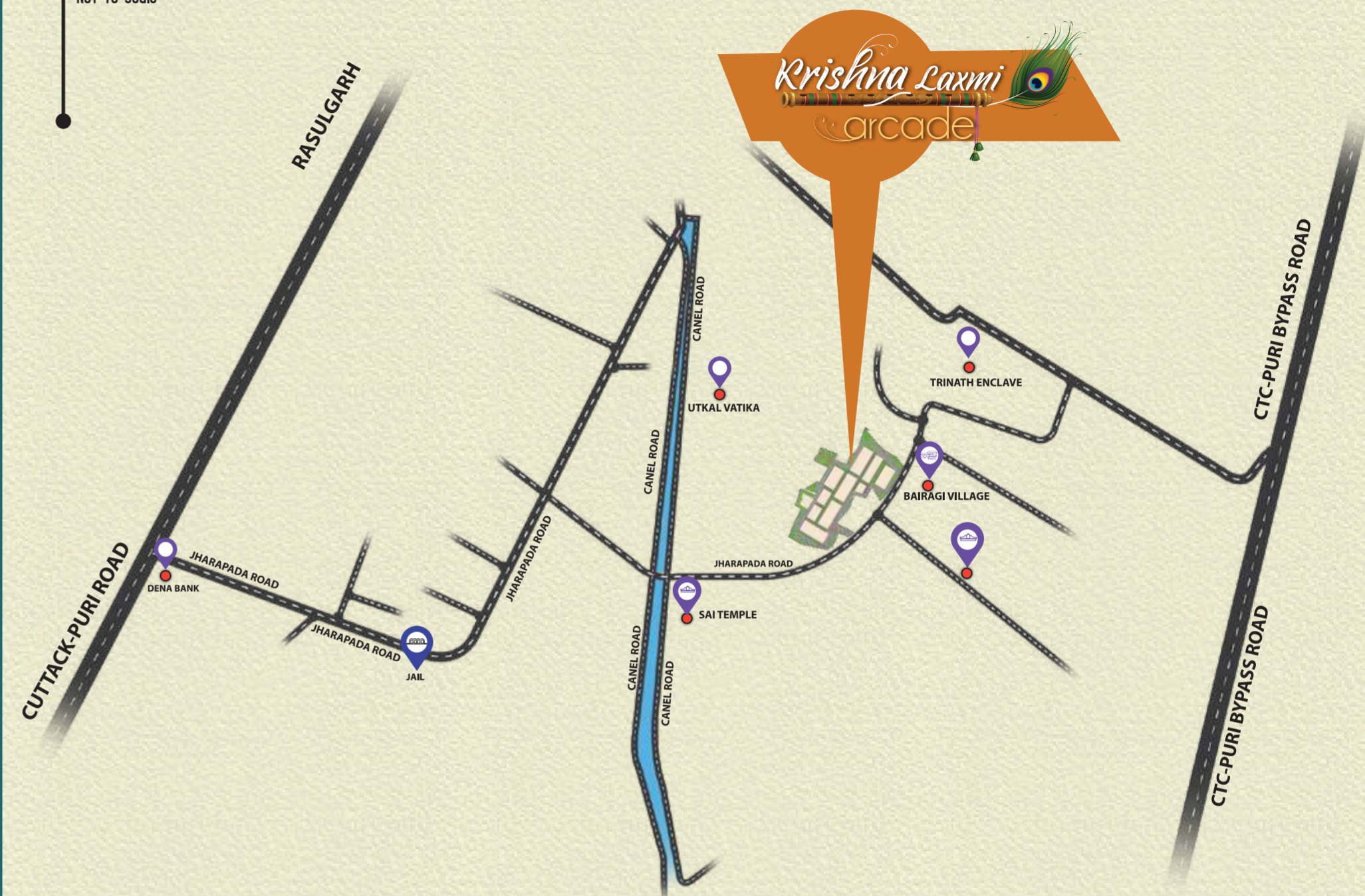
M.S. (Mild Steel) Railings as per Design

### STAIRCASE RAILING

S.S. Railing as per Design

## Location Map

Not to scale\*



It is always our aim to present a better location from where you can maintain your comfortable living with all required modern amenities at your easy reach. Krishna Laxmi Acrade is location on the heart of the Templecity Bhubaneswar.



## Loacted in Jharapada,

2-3 minutes drive from National Highway,

10-12 minutes drive from Bhubaneswar Railway Station,

10-12 minutes drive from Hi-tech Hospital,

15-20 minutes drive from International Airport,

10-12 minutes drive from Rasulgarh Square,

2-3 minutes drive from Jaharapada Jail Sqaure

2-3 minutes drive from Nationalised bank, Daily Market, Schools,