



*Presenting*

A C R E R I S E  
**AURA**  
ELEVATE YOUR LIFESTYLE

Boutique, low-rise courtyard homes.



5 minutes from Trisulia Square





Ever thought about finding the perfect home for your family?

A secure, amenity-rich home that ensures peace of mind?



A C R E R I S E  
**AURA**  
ELEVATE YOUR LIFESTYLE





*Presenting*

ACRERISE  
**AURA**  
ELEVATE YOUR LIFESTYLE

Boutique, low-rise courtyard homes.







\*artistic impression



# NATURAL BEAUTY MEETS MODERN REFINEMENT



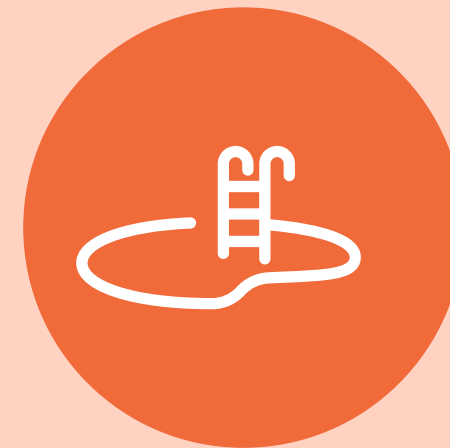
## Strategic Location

Experience the best of  
Bhubaneswar &  
Cuttack



## Boutique, low-rise living

Boutique  
community of just  
200 families



## Splendid Lifestyle

Spread across 2  
acres, featuring over  
20 amenities



## Affordable Living

Lifestyle that's  
comfortable and not  
heavy on your pockets

# Bhubaneswar's most cherished developer



**15+** Years of Real Estate Experience

**3** Ongoing projects

**35+** Lakh sq. ft. planned for future developments

**TIMES MOST PROMISING BRAND**

# PROJECTS IN OUR PORTFOLIO



ACRERISE AURELIA  
*DELIVERED*



ONE WORLD  
*ONGOING*

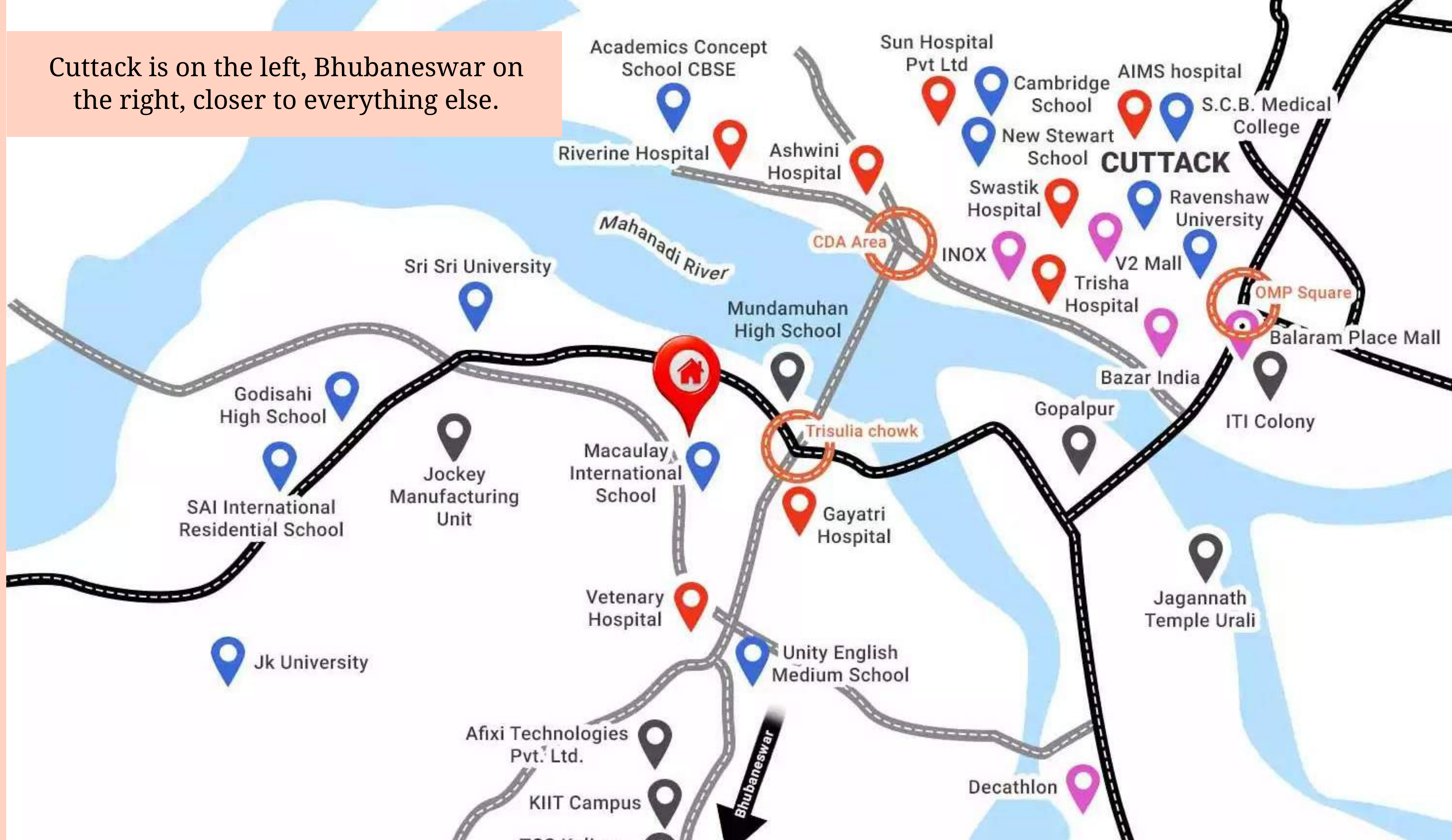


ACRERISE AMANTRAN  
*ONGOING*



Strategically located between the twin cities  
of **Bhubaneswar** and **Cuttack**

Cuttack is on the left, Bhubaneswar on the right, closer to everything else.

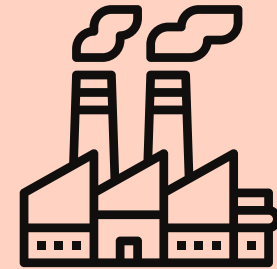




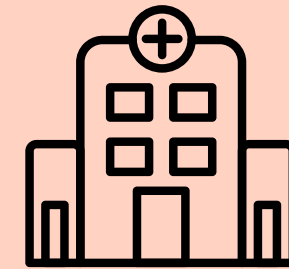
# Stay in the epicentre of the Old and New Bhubaneswar



Educational institutions including KIIT, NLUO, Sri Sri University, SAI International School, Ravenshaw University, NIFT, are within close proximity.

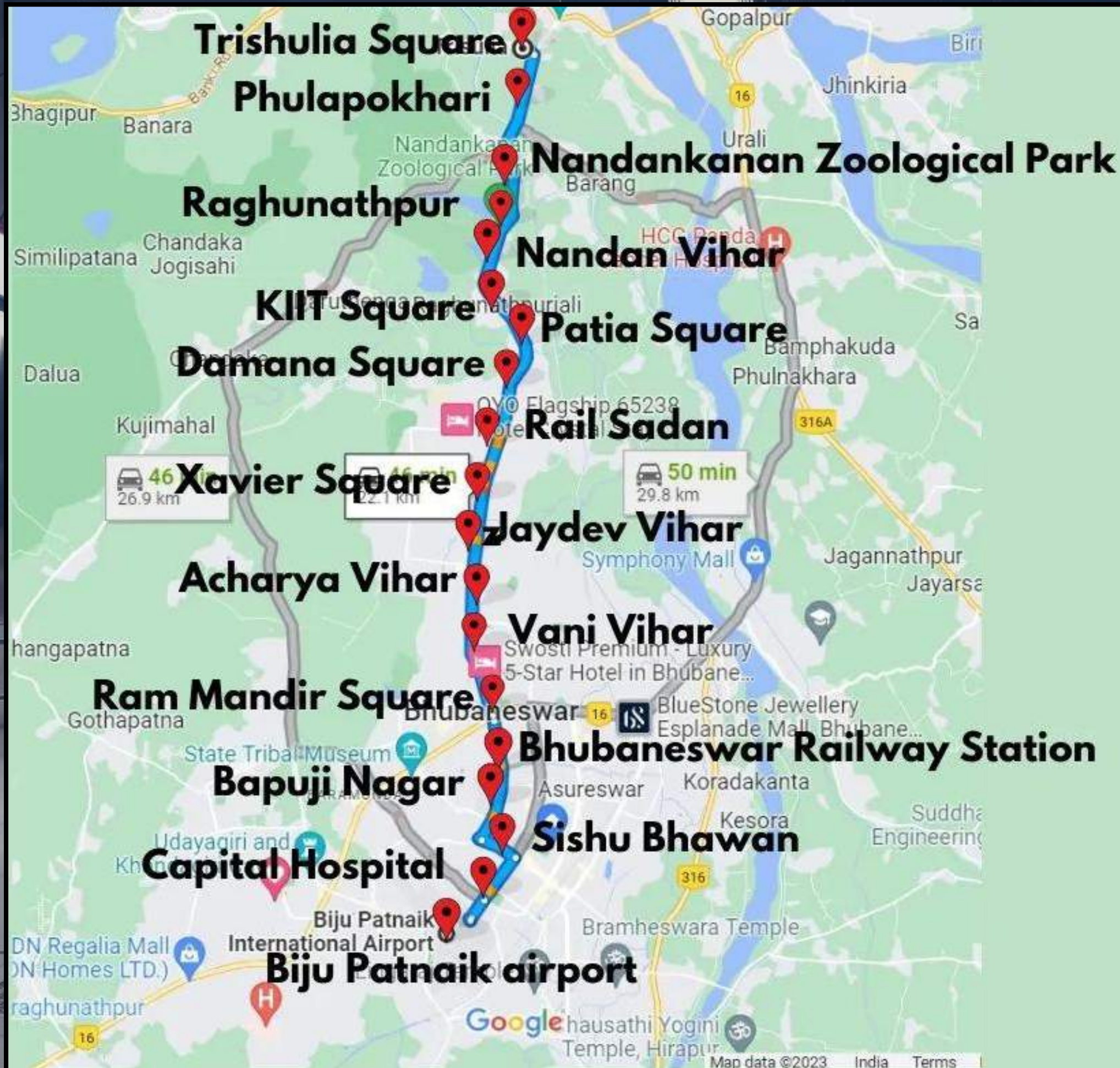


Major industrial hubs like OMFED, JSW & MG Group, Ramdaspur Industrial Estate, Jockey, Welspun Living Ltd. are also nearby.



Located close to leading hospitals such as KIMS, SCB Campus 2, Shishu Bhawan, providing easy access to healthcare.





Uninterrupted connectivity from Cuttack to Bhubaneswar, with the metro station at Trishulia Square and Nandankanan Zoological Park at the center.





AN INCLUSIVE LIFESTYLE SO  
THAT THERE IS NEVER A  
DULL MOMENT

Carefully curated 2 acres for just 200 families.



# Amenities For All



For Kids



For Adults



For Senior Citizens





# For Kids

- Children's Play Area
- Swimming Pool
- Indoor Games Room
- Cycling Track





# For Adults

- Party Lawn
- Jogging Track
- Podium Landscape
- Terrace Landscaping
- 6-meter Central Driveway





# For Adults

- EV Charging
- Gymnasium
- Banquet Hall with Kitchen





# *For Senior Citizens*

- Yoga Room
- Senior Citizens Park
- Gazebo Sitting Area
- Reading Room





# A Relaxing Place to Unwind After a Stressful Day





# Endless Fun in Our Indoor Games Room





# Perfect Venue for Your Birthday Parties and Special Events





# Warm Welcoming Reception for Your Guests





# 3 BHK Layout Options

<b>3 BHK Configuration</b>	<b>SBUA</b>
Type A - I	1370 sq. ft.
Type A - II	1390 sq. ft.
Type B	1300 sq. ft.
Type C	1300 sq. ft.
Type D	1300 sq. ft.



*Your Home Your Aura*

