



Mahadev Griha Nirman Pvt. Ltd.
Plot No: S1/111, Sector-A-Zone-A
Mancheswar Industrial Estate, Bhubaneswar-751010
Contact us : 8377 845 845
Email : info@mahadevgreens.com

Site Address

Mahadev site address - Plot No 458, Near Sandhapur,
Hanuman Temple, Banki Rd,
Trisulia, Odisha 754006

Lead Architect



RERA & CDA Approved



RERA - MP/07/2023/00945
www.rera.odisha.gov.in

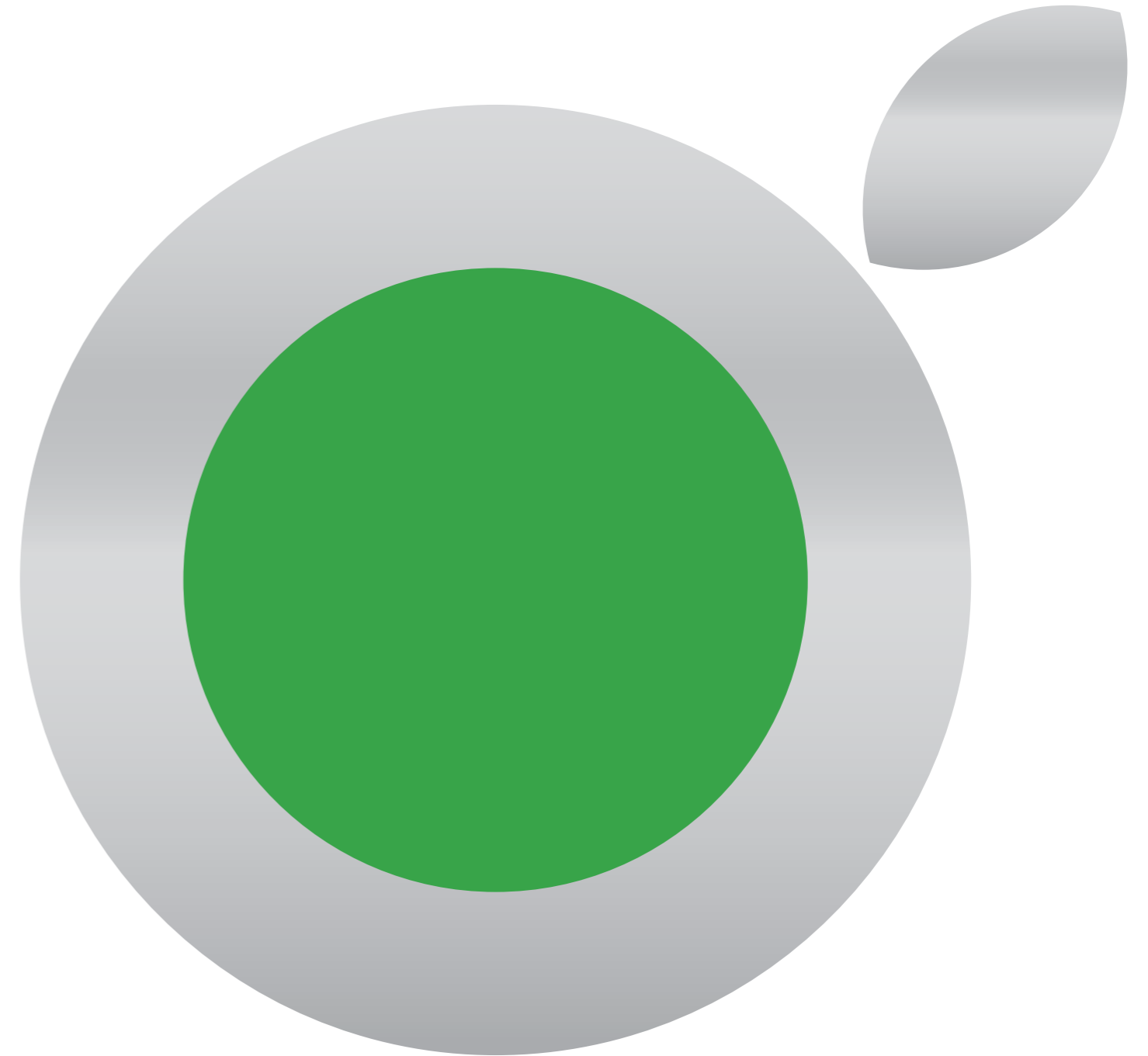
Approved by all leading banks

Disclaimer

This Brochure is not a legal document. It describes the conceptual plans to convey the intent and purpose of **Mahadev Greens**. The images and the details mentioned in this Brochure are tentative and subject to change at the sole discretion of the developer and/or architects.




Scan for location



MORE SPACE

**MORE
LIFE**

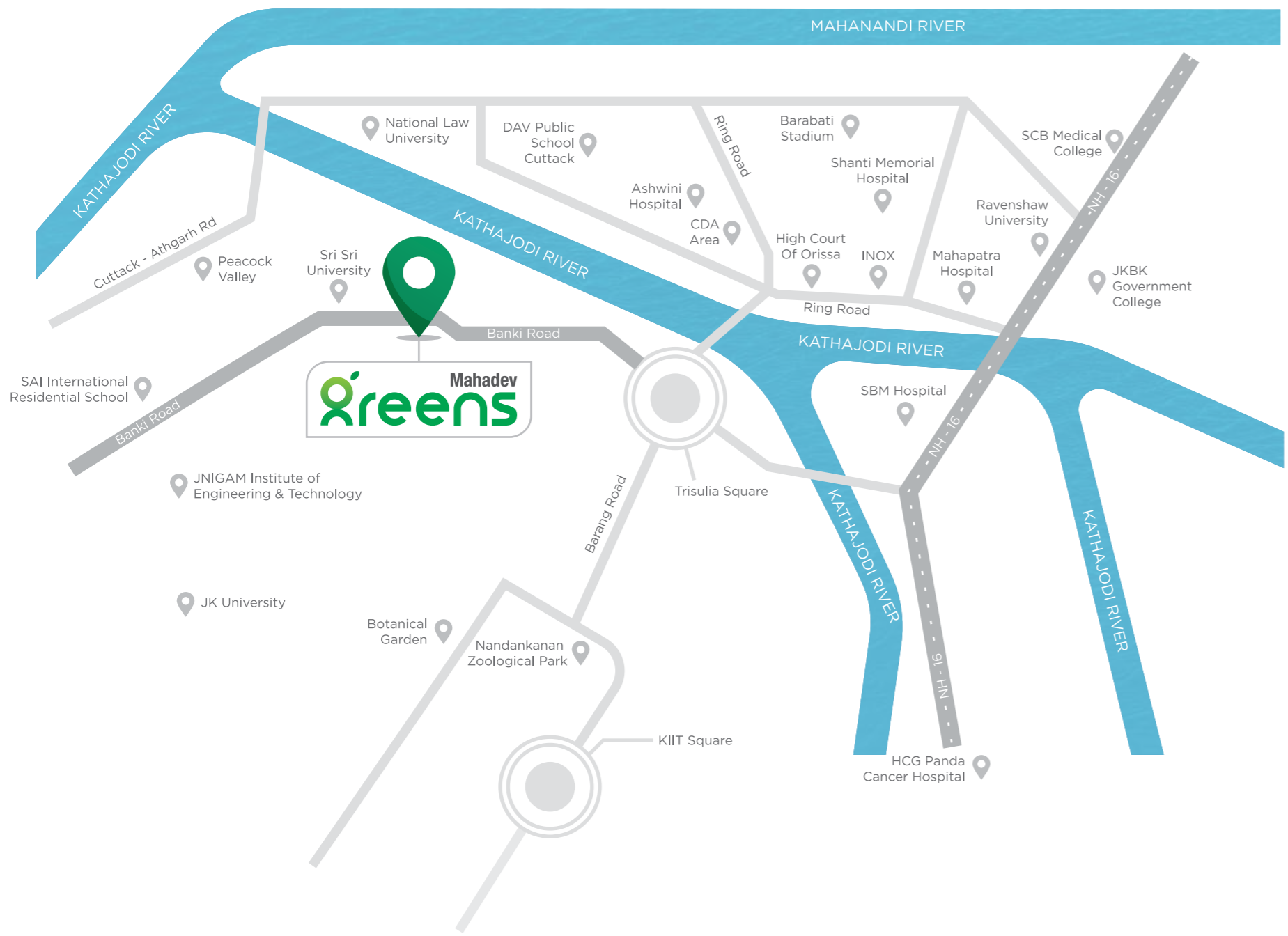
greens Mahadev



Welcome to the home of **YOUR DREAMS**.
An address replete with **MODERNISM**.
An abode overlooking the **MISTY RIVER**.
A sanctuary of **PEACE & TRANQUILITY**.

Spread over a sprawling 2.8 acres of land, featuring 2/3/3.5 and 4.5 BHK luxury apartments, on the main road at Banki Road, Trisulia, and housing a world of contemporary amenities, it is a one-of-a-kind living space that offers you more than just brick and mortar, it offers you a living breathing four walls. So, we welcome you to Mahadev Greens. We welcome you to a life of MORE!





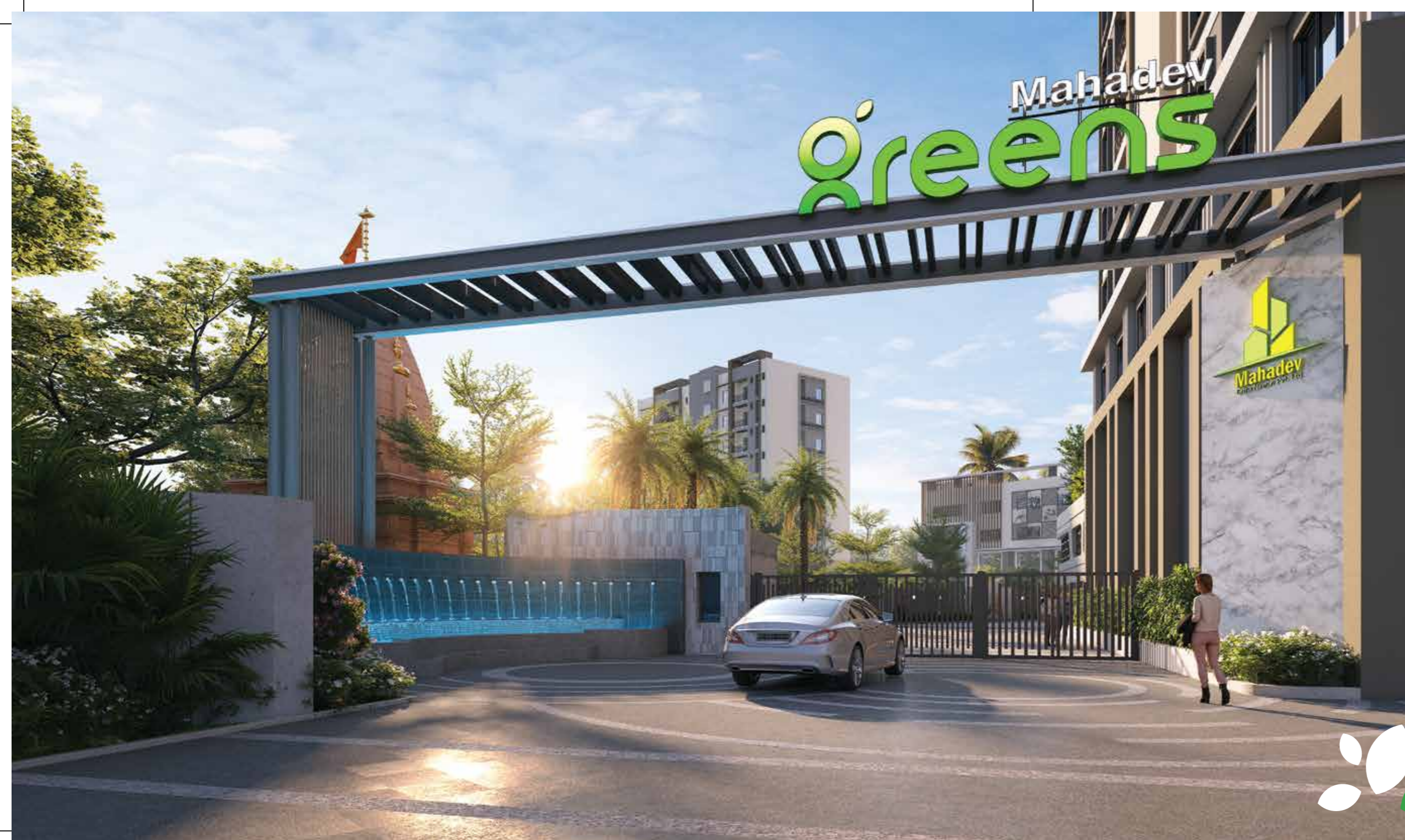
Live Where Convenience Lives.

Travelling in the city is often a chore. But you don't need to worry in the slightest. With the upcoming metro project, and all major convenience centres within touching distance, life here is a breeze.

- ▶ Sai International Residential School - 8 Mins
- ▶ Dav Public School - 20 Mins
- ▶ Ashwini Hospital - 18 Mins
- ▶ SBM Hospital - 18 Mins
- ▶ SCB Medical - 28 Mins
- ▶ Sri Sri University - 4 Mins
- ▶ Cuttack Railway Station - 26 Mins
- ▶ Airport - 53 Mins
- ▶ High Court - 16 Mins
- ▶ KIIT Square - 28 Mins
- ▶ Nandankanan - 10 Mins
- ▶ CDA Area - 10 Mins



Road Side View



Open For All

Cities are concrete jungles and the pollution can make even the sky hard to see, but at Mahadev Greens, we have built the project with 68% open space, so that there are more greens around you, and more blue above you to see!

Mahadev Greens Highlights

- ▶ Vaastu compliant units
- ▶ 68% open space with landscaping
- ▶ 40+ amenities (spread over 50,000 sq.ft.)
- ▶ Units are designed keeping airflow and natural light in mind
- ▶ Mostly 3 side open flats (no common walls)
- ▶ More than 12000 sq.ft. of podium with greenery
- ▶ Around 2500 sq.ft. temple with greenery
- ▶ Shopping complex for more convenience
- ▶ Independent exclusive Clubhouse
- ▶ Interconnected blocks A, B & C
- ▶ Spacious flats overlooking the river
- ▶ Spacious common corridor in all blocks
- ▶ Sufficient number of elevators
- ▶ 40 KW solar panel
- ▶ All bathrooms are naturally ventilated



EXPLORE THE
SERENITY OF
MORE
GREENS





Naturally Airy

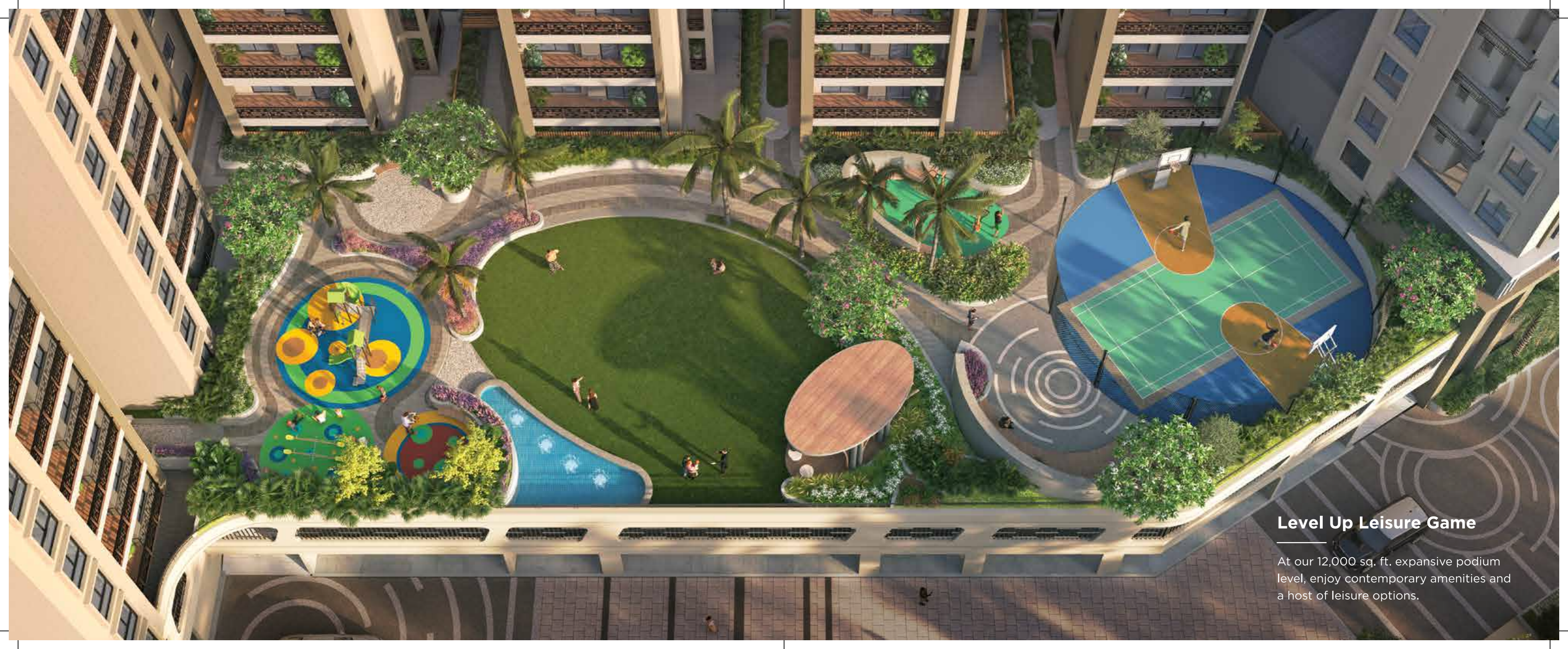
Be wrapped in serene surroundings as you wake up to bird songs and misty sun rays.





Find Inner Peace

The sprawling temple complex stands testimony to one of the oldest religions of the world - Hinduism, and creates a pious environment for everyone to feel at peace.



Level Up Leisure Game

At our 12,000 sq. ft. expansive podium level, enjoy contemporary amenities and a host of leisure options.



Play It Up

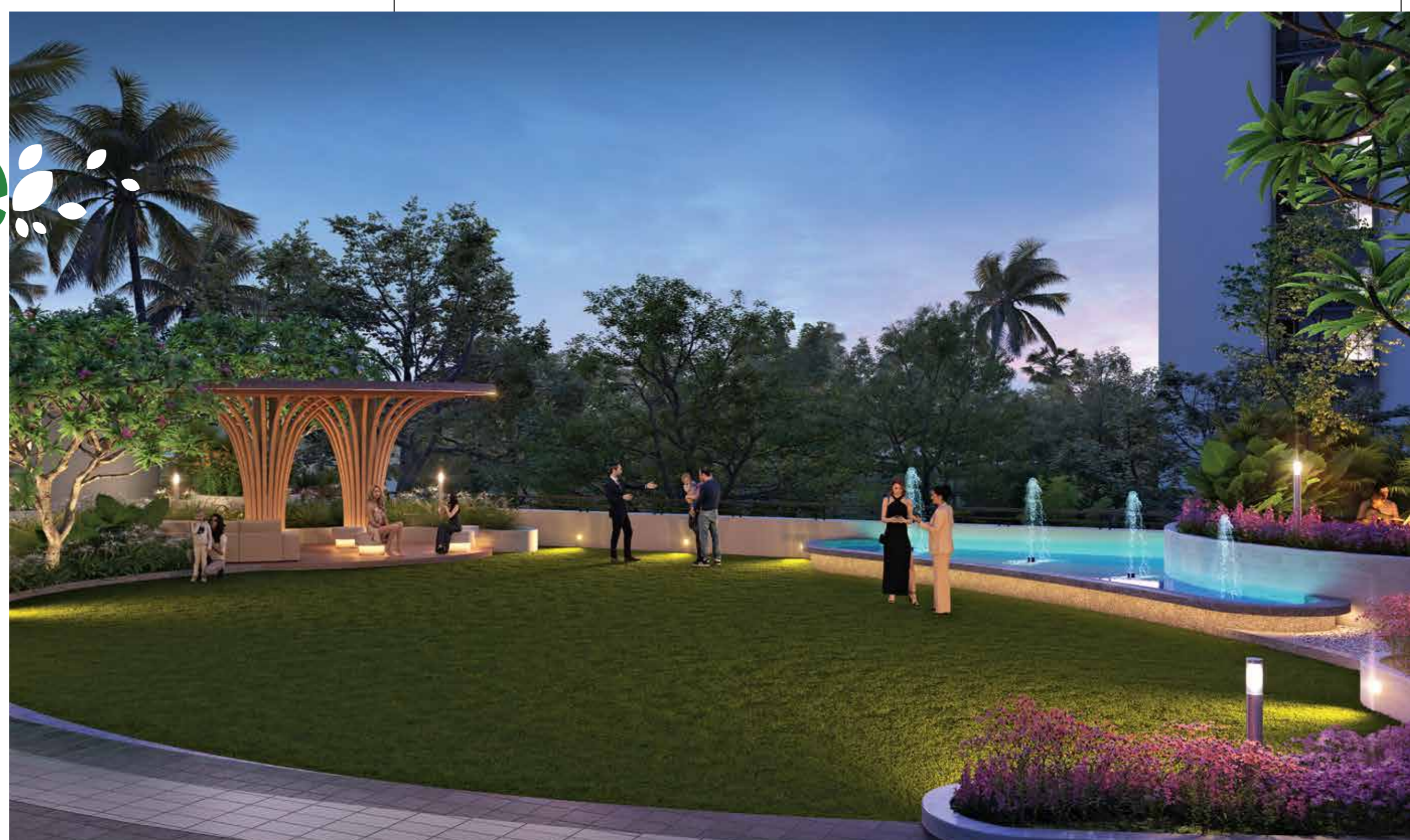
The beautiful kid's play area makes for the perfect place to keep your kids engaged.

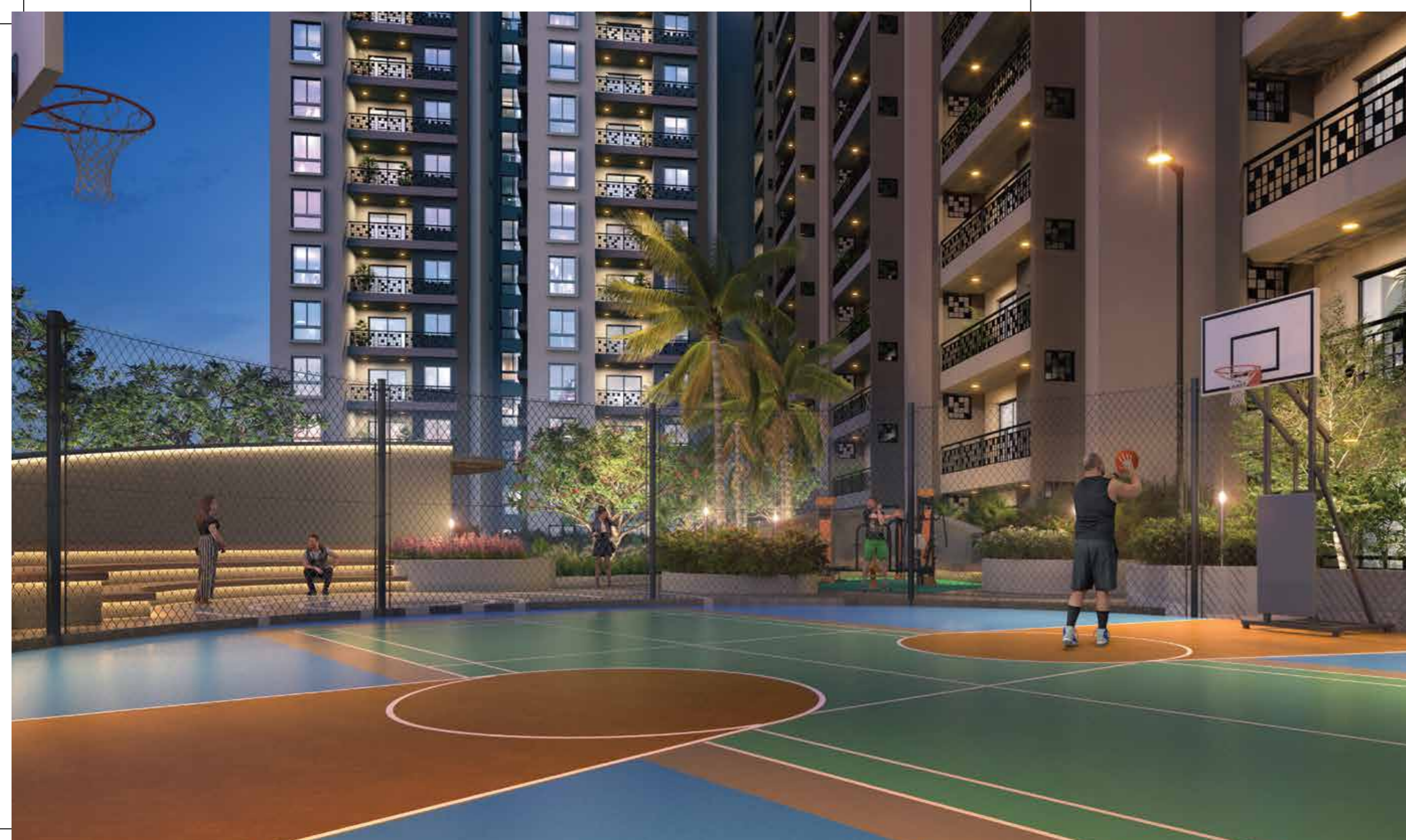




Holiday. Everyday.

What our fast paced life needs is stillness!
And at our expansive podium you will
experience relaxation redefined.





Slam Dunk

Our exclusive multipurpose court will let you ace the games.

Badminton court | Half basketball court



LIVE A
LIFE OF
MORE
REJUVENATION





The Greens Club Amenities

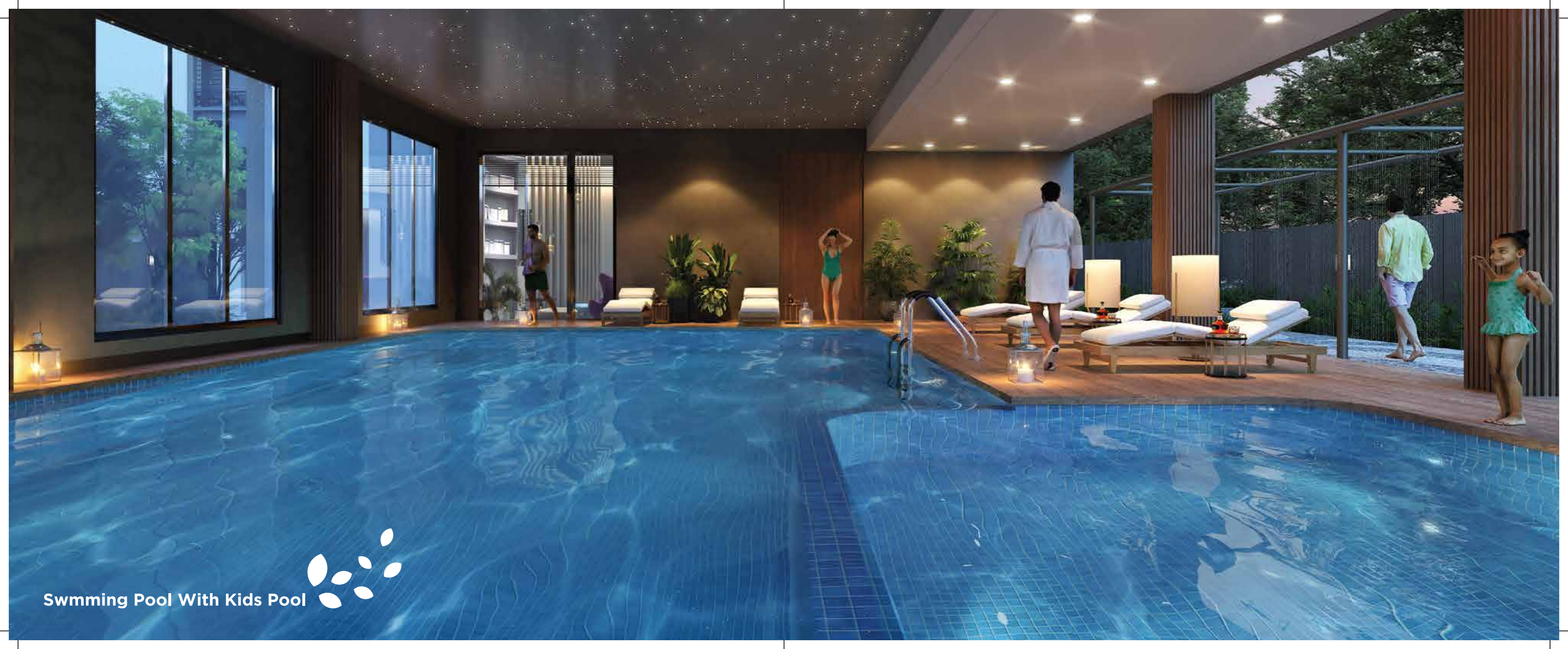
- ▶ Indoor swimming pool with kids pool
- ▶ Rain dance floor
- ▶ Steam/sauna room
- ▶ Multipurpose hall
- ▶ Indoor games room (tt table, air hockey, snooker, carrom, foosball)
- ▶ Card & chess room
- ▶ Library room
- ▶ Meeting/society room
- ▶ Toddlers room
- ▶ Work from home station
- ▶ Ultra modern gymnasium
- ▶ Fully furnished guest rooms



Have A Splashing Time

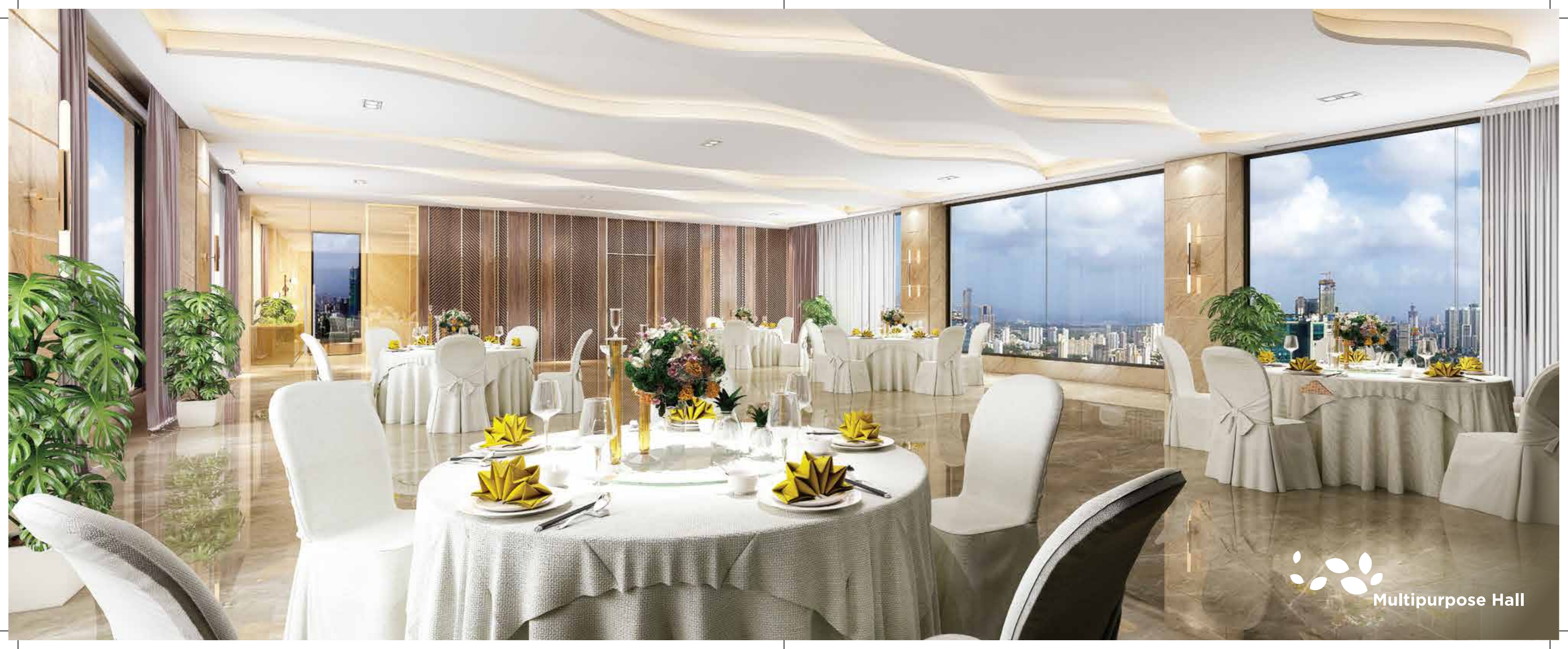
They say swimming keeps not only your body fit but also your mind. Find out for yourself at the children's pool.





Swmming Pool With Kids Pool

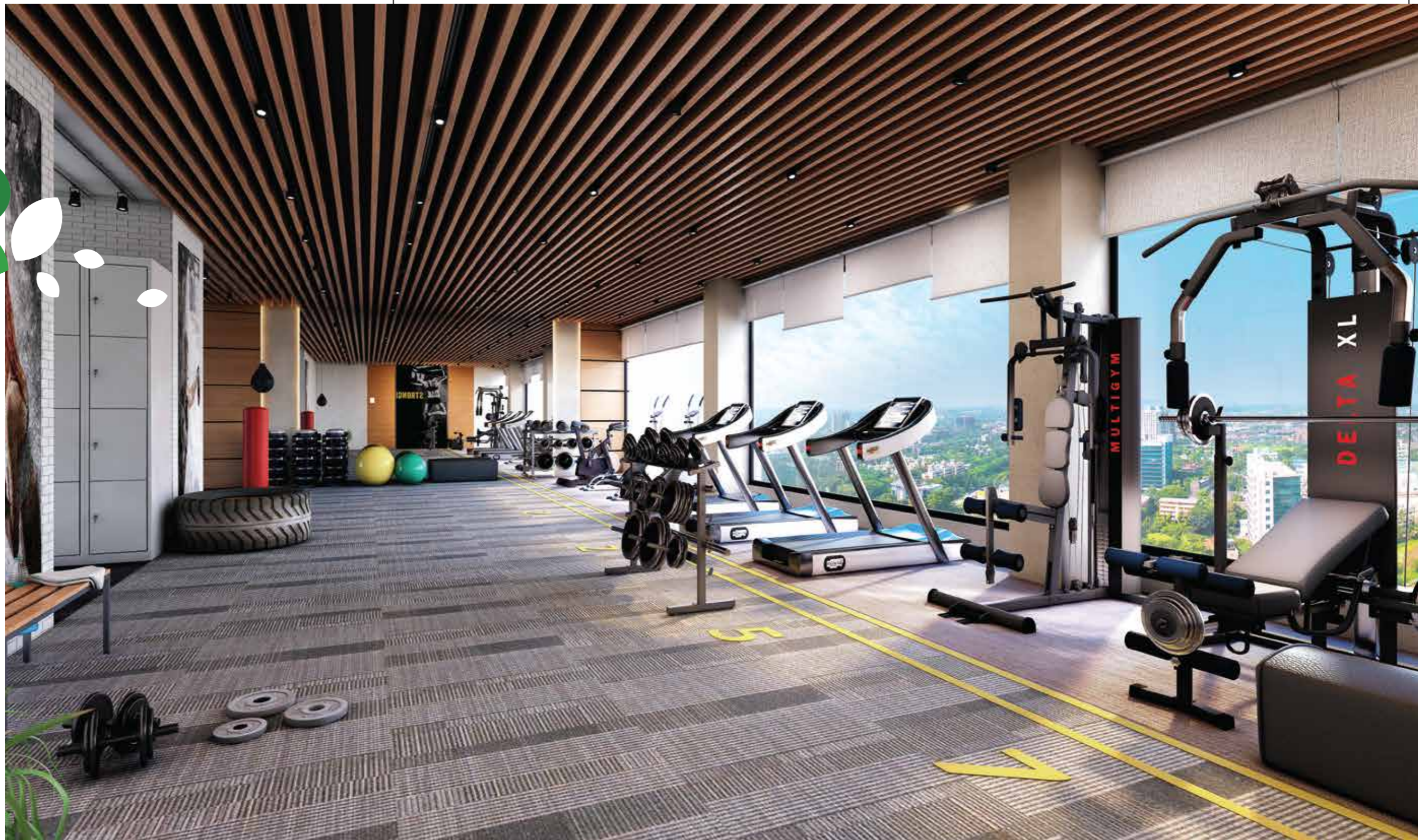




Multipurpose Hall

Go Flab-Free

Burn those extra kilos and go from flab to fab at our state-of-the-art gymnasium.





Be A Table Topper

They say practice makes perfect, and practicing a game can make you a champion. Our games room is just for that!







Live With Luxury

A life within four walls should feel like living a king's life. The aesthetically designed interiors bring alive that royal feeling.



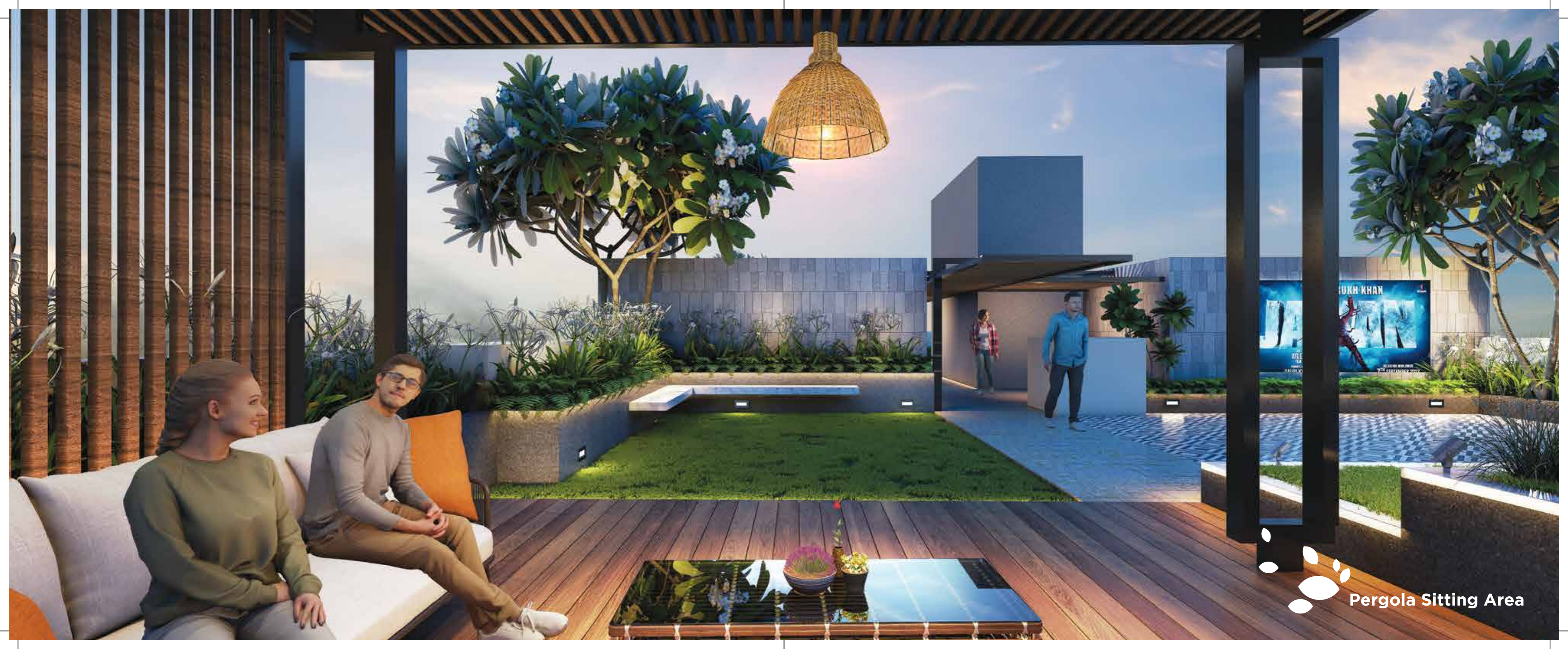


Dial Up To Luxury

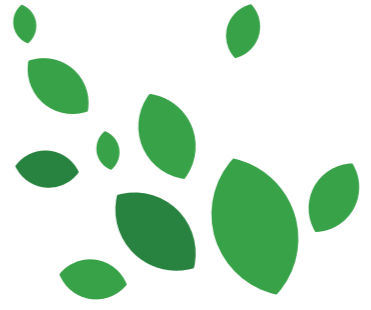
Our ultra premium Block D features roomy and luxurious 4.5 BHK apartments, coupled with opulent and contemporary rooftop amenities to elevate your living experience to greater heights.

Leisure Lawn | Lounge Deck | Amphitheatre
BBQ Counter | Party Lawn | Party Deck
Walkway | Stepping Stone Walk | Seating
Array | Sculpture | Each floor height
3300mm | Mechanical Stack Parking





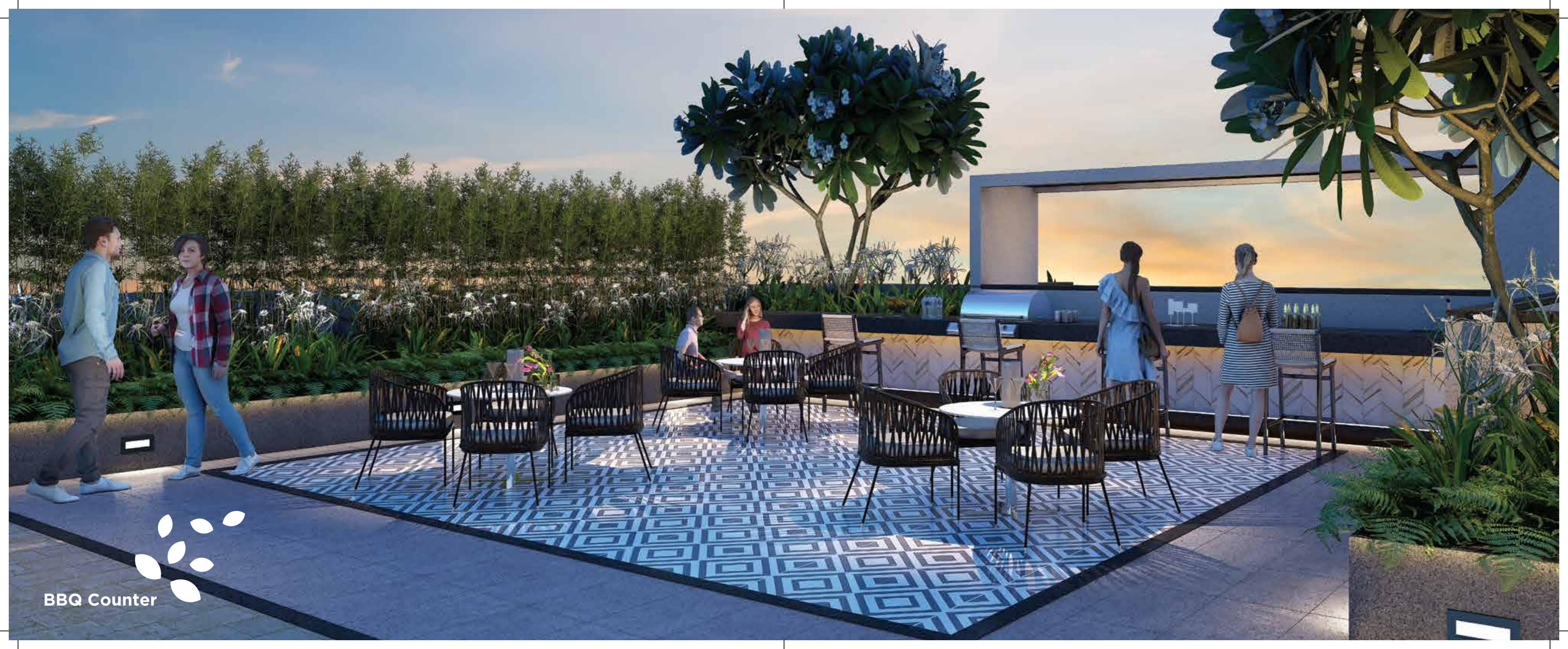
Pergola Sitting Area



No Kidding Around

Our kid's play area on the terrace lends a new dimension to keeping your kids engaged with a tasteful view of the open sky.





BBQ Counter





Shop Till You Drop

Our retail address houses the best of brands so that you can pick and be a trendsetter.



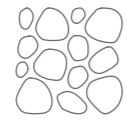
LUXURY AMENITIES



Entrance Water Feature



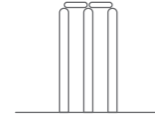
Temple



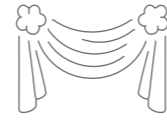
Stepping Stone Walk



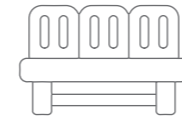
Jogging Track



Cricket Net Practice



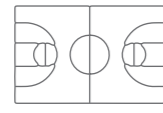
Wall With Sculpture



Seating Ledge



Central Lawn



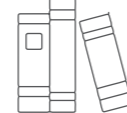
Multipurpose Court



Kid's Play Area



Pebble Court With Sculpture



Library Room



Reflexology Garden



Herb Garden Sit Out



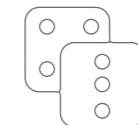
BBQ Counter At Terrace



Yoga Cove



Modern Gymnasium



Open Games Corner



Terrace Party Area



Swimming Pool



Leisure Lawn At Terrace



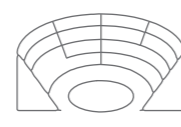
Aroma Garden Sit Out



Shade Garden Sit Out



Surya Pranam Platform



Amphitheatre



Badminton Court



Vaastu Compliant



Multipurpose Hall

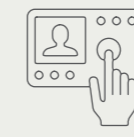
OTHER COMMON FACILITIES



Entry & Exit Gate



24x7 CCTV Surveillance



Intercom Facility



Rain Water Harvesting



Service Lawn



100% Power Backup



Fire Fighting System



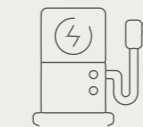
Pollution Free Environment



Sufficient Elevators



Parking Facility



EV Charging



Work From Home Station



Water Treatment



Solar Water Supply

SPECIFICATIONS

Structure : Rcc Frame Structure With Fe500 Grade Tmt Rod.

Boundary Wall : 5' Height 8" Thickness Boundary Wall With Periphery Lighting.

Pathway : Designers Pavers Tiles In Pathway.

Common Areas :

Corridor & Staircase Railing : Stainless Steel Railing.

Floor : Combination Of Granite With Ceramic Tiles.

Staircase : Granite/ Kota Stone Finish.

Wall : Acrylic Emulsion With Putty Finish.

Lift Facia : Granite Cladding.

Drawing/ Dining :

Door Frame : WPC Chaukat.

Main Door : Teak Veneer Door With Matte Finish & Door Frame Panelling.

Hardware : Premium Range Of Hardware Fitting.

Floor : Premium Range Of Vitrified Tiles With 4' Skirting.

Wall : Premium Range Of Acrylic Emulsion With Putty Finish.

Kitchen :

Door Frame : WPC Chaukat.

Doors : Laminated Flush Doors.

Floor : Premium Range Of Vitrified Tiles With 4' Skirting.

Platform : Wall Cladding Of Ceramic Tiles Upto 2' Height Above Granite Platform.

Wall : Premium Range Of Acrylic Emulsion With Putty Finish. S.S. Sink With Branded C.P. fitting provision For Chimney & Aquaguard.

Bedroom :

Door Frame : WPC Chaukat.

Doors : Laminated Flush Doors.

Hardware : Premium Range Of Hardware Fitting.

Floor : Premium Range Of Vitrified Tiles With 4' Skirting.

Wall : Premium Range Of Acrylic Emulsion With Putty Finish.

Windows : Aluminum Powder Coated/ UPVC.

Balcony Railing : Ms Pipe Railing.

Toilet :

Door Frame : WPC Chaukat

Door : Laminated Flush Doors.

Floor : Anti Skid Ceramic Tiles.

Wall : 7' Height Of Ceramic Tiles.

C.P : Premium Range Of C.P. & Sanitary Fittings. Wall Mounted Ewc Includes Seat Cover. Provision For Geyser & Exhaust Fan. Rest Wall Will Have Acrylic Emulsion With Putty Finish.





Elevate Your Lifestyle

The meticulously designed residential complex is a haven of sophistication. Come, live a life of unhindered luxury.