

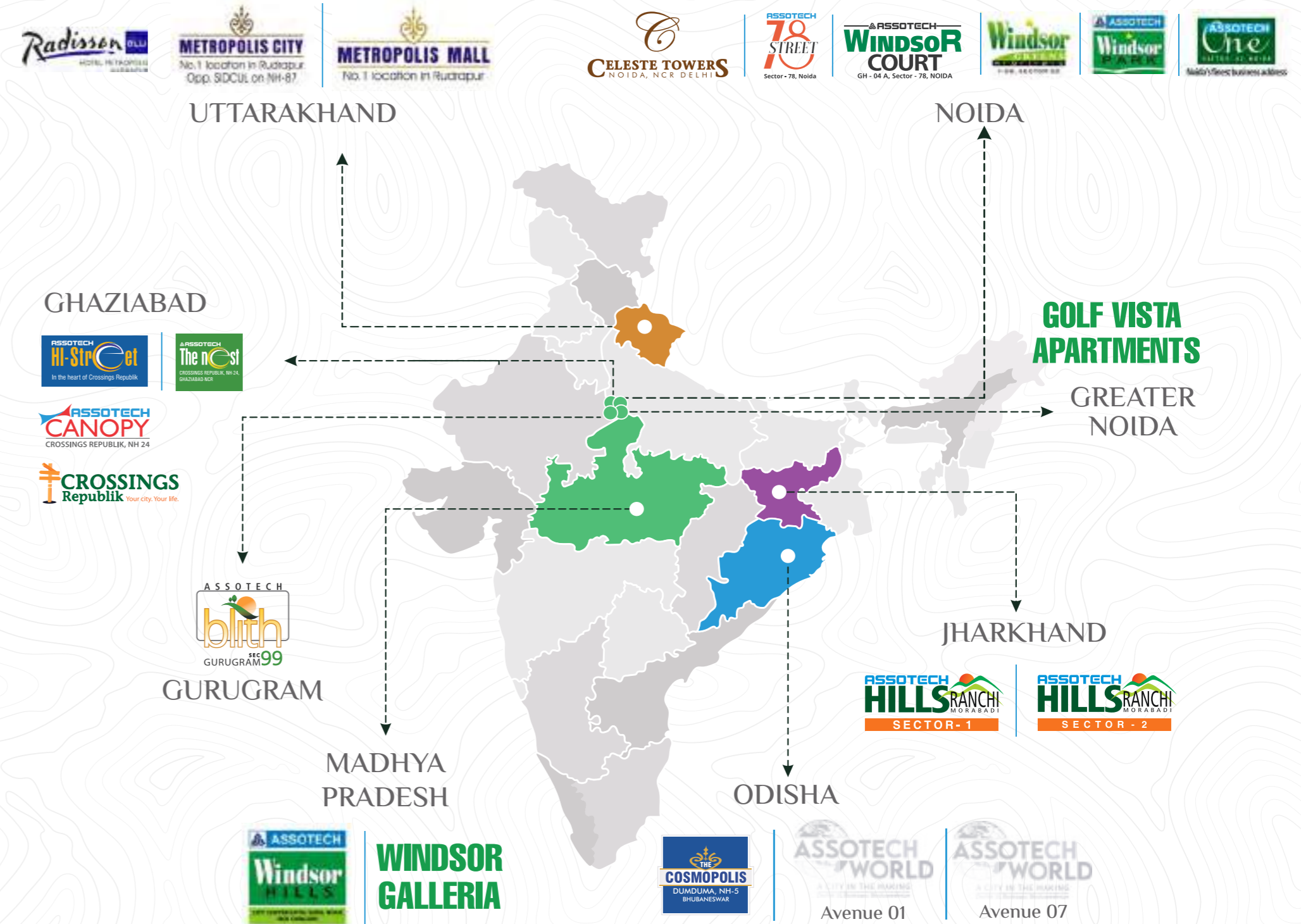


Assotech Group, established in 1987, has delivered over 40,000 homes across prestigious projects in Delhi NCR and beyond. Known for 'Reliability with High Standard Quality,' their work reflects extensive research-led engineering and ethical business practices.

Unexpectedly Prolific

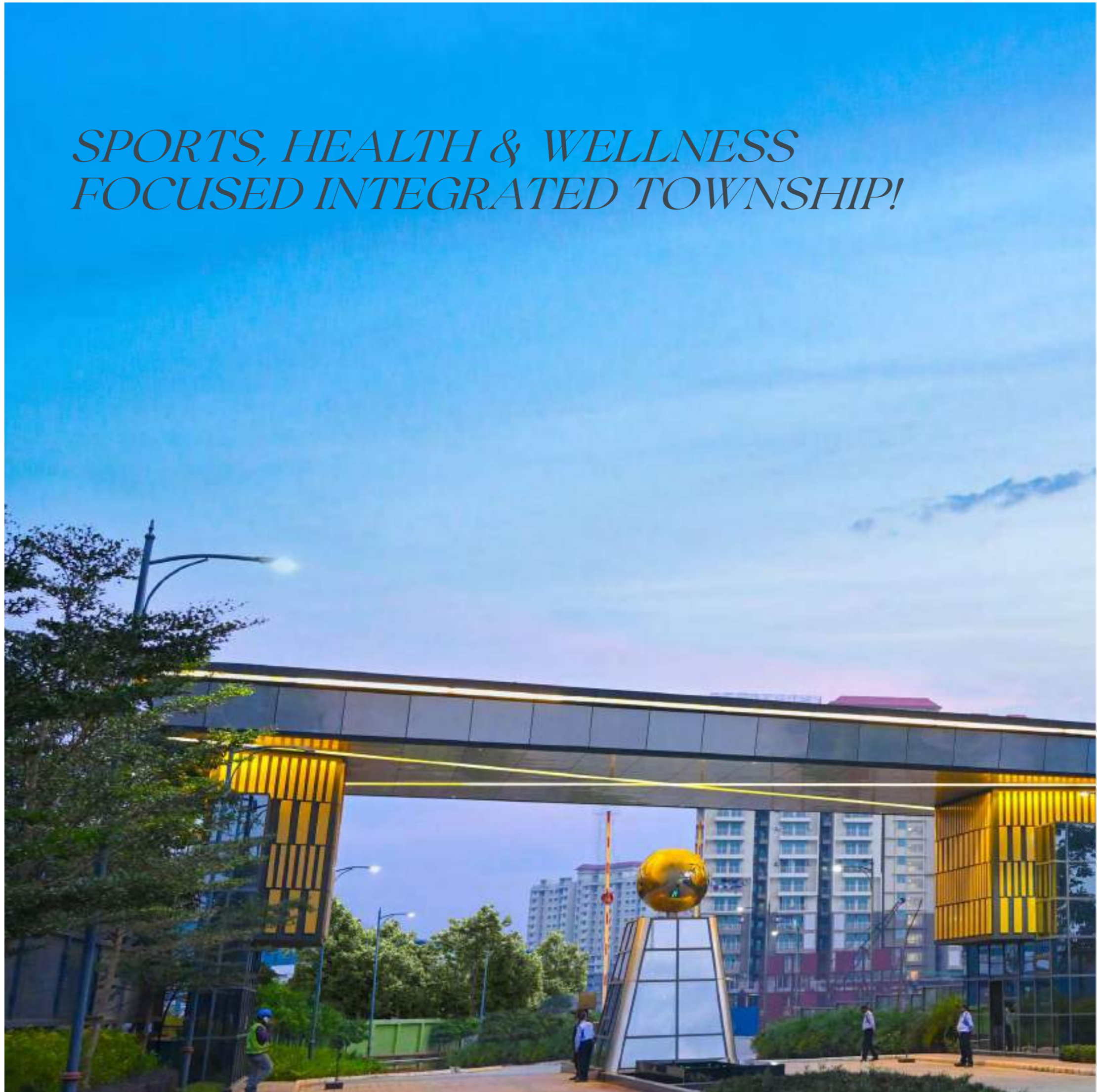
- Assotech One (Noida) | Celeste Towers (Noida) | Windsor Greens (Noida)
- Windsor Galleria (Noida) | VSNL Apartments (Noida) | Yarrow Apartments (Noida)
- Stella Service Apartments (Noida) | Golf Vista (Greater Noida) | Windsor Park (Indirapuram)
- The Nest (Crossings Republik) | Crossings Republik (Ghaziabad) | Assotech Hi-Street (Ghaziabad)
- Windsor Street (Ghaziabad) | Cabana Service Apartments (Ghaziabad) | Blith (Gurgaon)
- Assotech Hills Sector-1 & 2 (Ranchi) | Windsor Hills (Gwalior) | Windsor Galleria (Gwalior)
- Metropolis City (Rudrapur Uttarakhand) | Metropolis Mall (Rudrapur)
- Gaggal Housing Colony (Himachal) | Cosmopolis (Bhubaneswar) | Avenue 01 (Bhubaneswar)

National Presence



37 YEARS OF COMMITMENT | 45+ SUCCESSFUL PROJECTS | 40000+ DELIVERED UNITS | 1000+ FLATS / UNITS DELIVERED IN 2024

*SPORTS, HEALTH & WELLNESS
FOCUSED INTEGRATED TOWNSHIP!*





Artistic Impression

Artistic Impression



BRINGS YOU

AVENUE 07

The close resemblance between Bhubaneswar and South Asian Climate, prompted us to design Avenue-07 based on South Asian architecture. Our landscape consultant Mary Claire Villanueva of Augustree Designs based out of Manila, Philippine, has crafted unique community inspired infrastructure with myriad community spaces for meet and greet at vantage location with dynamic landscaping and floral marvels. Impeccable smart lighting uplifts the ambiance and makes the outdoor truly amazing.

The 910 beautifully crafted apartments by Mr. Sagarendra Mohaptra and Mr. Sabyasachi Mohanty of Saurashtra Das Consultant, in association with Mr. Anshu Mahajan of RSP Design Consultants (India) Pvt Ltd, Bangalore has most contemporary elevation are jewel in the skyline of Bhubaneswar which will make the living memorable experience.

*Unveiling marvels
at every turn*



Artistic impression of Central Walk

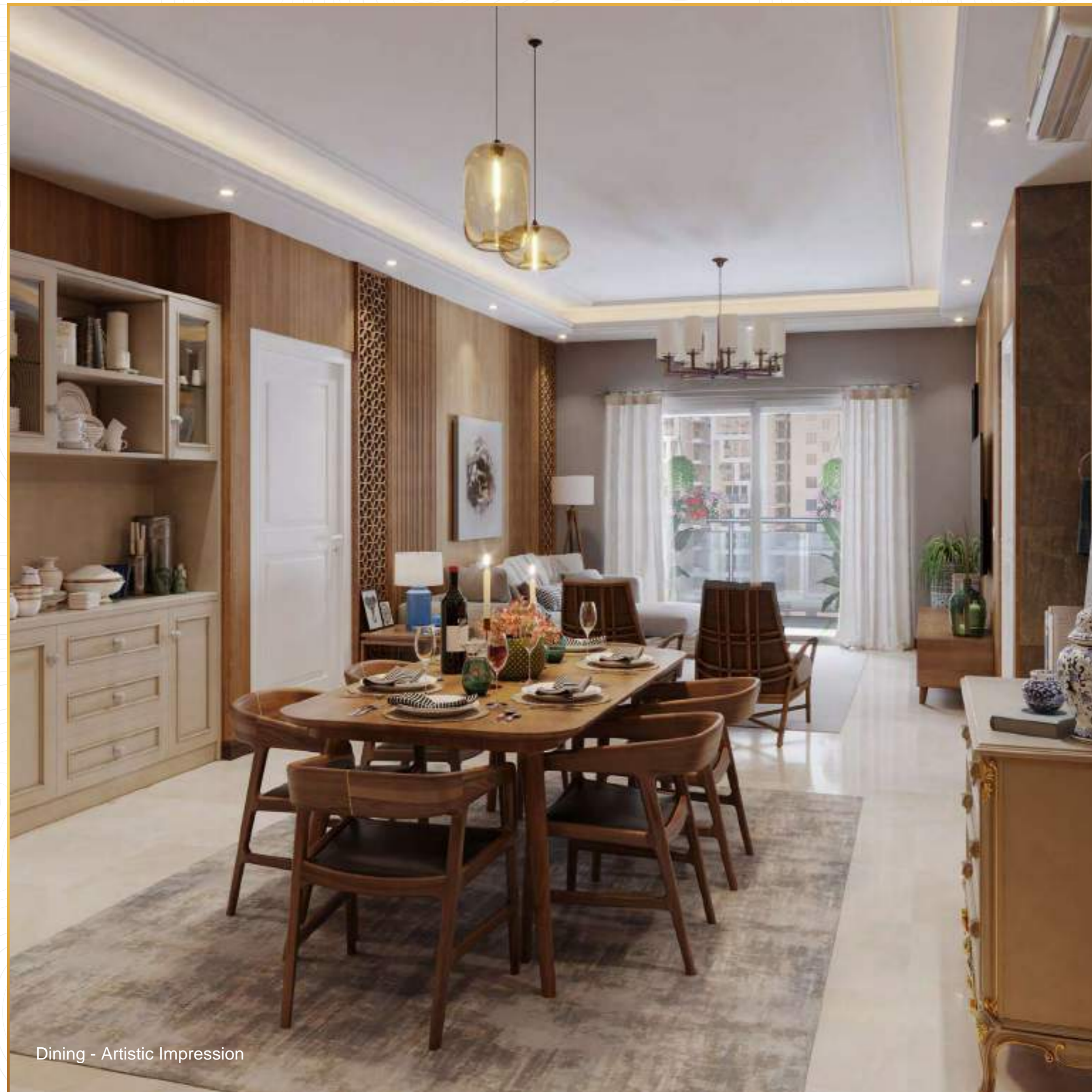
Step into a world where every detail surpasses your expectations. Our luxurious interiors blend elegance with comfort, offering designs that redefine modern living. From spacious layouts to premium finishes, each space is crafted to elevate your lifestyle. Experience a new standard of sophistication that feels effortlessly comfortable yet unexpectedly high in style and grace.



Entrance Lobby -
Artistic Impression

*Unexpectedly
Elegant*

Avenue 07 transcends mere living arrangements, offering a lifestyle imbued with sophistication and flair. In other words, luxe apartments with the best amenities known to mankind.



Dining - Artistic Impression



Living Room- Artistic Impression

Unexpectedly Luxurious

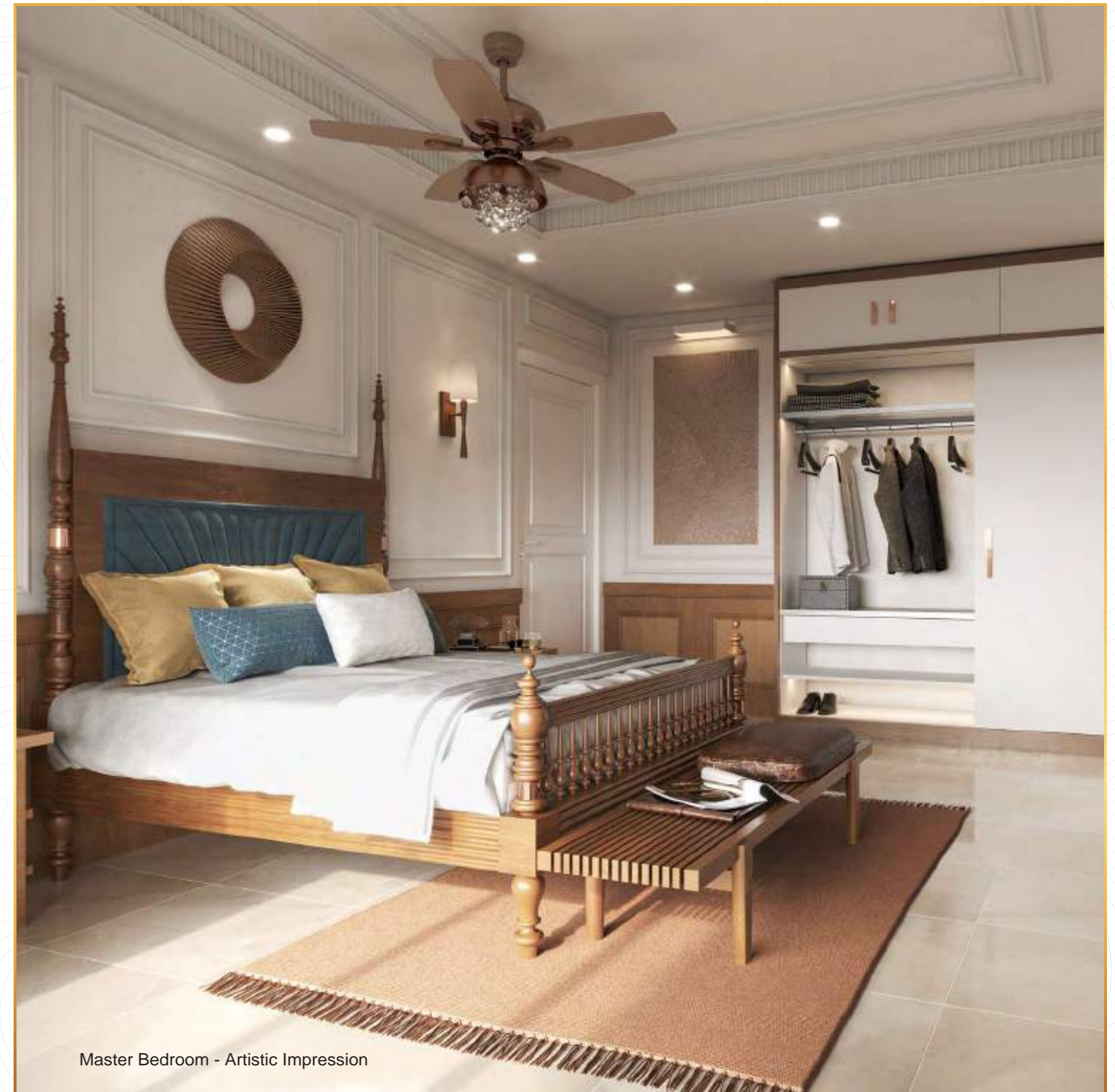
Beautifully designed interior spaces where finer detailing like maximized glazing width, Furniture positions, ceiling height, well lit bathrooms, wash basin with counter, wardrobe spaces, position of air-conditioner, coupled with natural light and ventilation based on sciography study.

Unexpectedly Splendid

At Avenue 07, your bedroom is more than just a space—it's a masterpiece of unexpected splendor. The bedrooms meet elegance and comfort in every corner. Designed with meticulous attention to detail, these sanctuaries exude a timeless charm, blending modern aesthetics with soothing hues. Luxurious finishes, thoughtfully crafted wardrobes, and expansive windows invite natural light to dance across the serene interiors, creating a warm and inviting ambiance.



Bedroom - Artistic Impression



Master Bedroom - Artistic Impression

Unexpectedly Stylish

The modular kitchens at Avenue 07 redefine contemporary living with sleek designs and smart functionality. Featuring premium finishes, state-of-the-art appliances, and thoughtfully optimized layouts, these kitchens are a perfect blend of style and efficiency. Every detail, from chic cabinetry to elegant countertops, enhances the joy of cooking in an unexpectedly stylish space.



Kitchen- Artistic Impression



Kitchen- Artistic Impression

Unexpectedly High



Bathroom- Artistic Impression

The bathroom interiors at Avenue 07 are a testament to thoughtful design, where every detail is crafted for comfort and luxury. Maximized glazing width, optimal placement of furniture, and elevated ceiling heights combine seamlessly with well-lit spaces. Wash basins with stylish counters, ample wardrobe spaces, and strategic air-conditioner placements enhance the experience, while natural light and ventilation, informed by sciography studies, create a refreshing, airy atmosphere.



Lounge & Dining-
Artistic Impression

Unexpectedly Panoramic

Savor breathtaking panoramas from the expansive balconies that grace each apartment. Offering a serene escape amidst verdant surroundings, these grand spaces sprawl far and wide, providing you and your family an entire world to unwind.





Unexpectedly Green

Step into the podium of possibilities at Avenue 07, where the spirit of sport meets the serenity of central greens. Designed for active lifestyles, this open space fosters energy, movement, and well-being. Whether you're chasing fitness goals or simply enjoying the outdoors, the expansive design encourages you to thrive. Avenue 07 isn't just a place; it's where openness inspires unexpected victories!

Actual Image-Avenue 01 Podium Site



Senior Citizens Garden- Artistic Impression

Unexpectedly Quiet

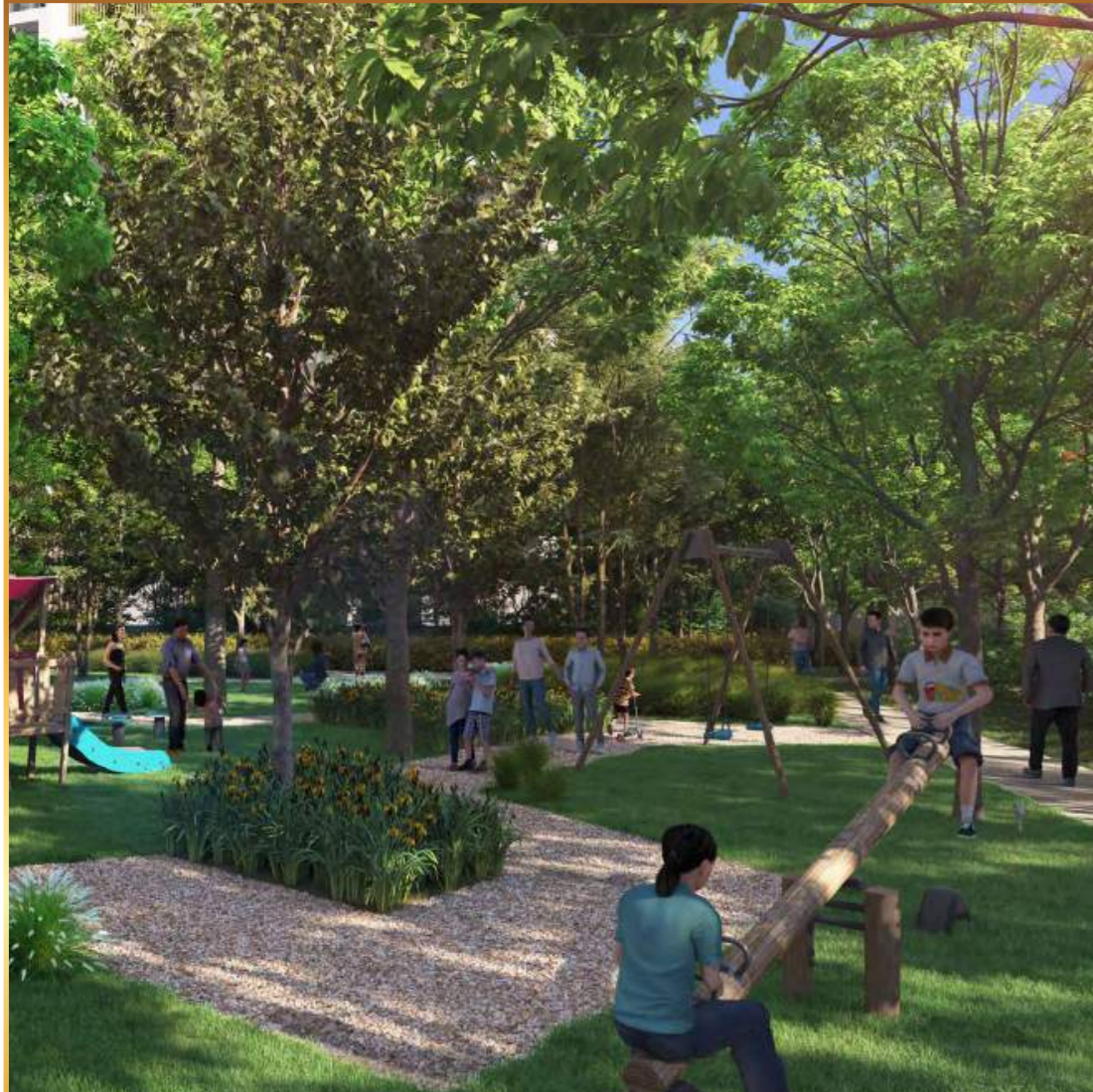
For those seeking solace, the Senior Garden at Avenue 07 provides a serene retreat away from the bustle of everyday life. Here, the elderly can reflect on life, make meaningful connections, and relax in a peaceful environment.

*Unexpectedly
Secure*



Woodland Area- Artistic Impression

Ensure your children's safety with elevated playgrounds offering carefree fun away from traffic and commotion. Enjoy peace of mind as your kids play to their heart's content while you indulge in your own pursuits or simply enjoy the view.



*Unexpectedly
Enlightening*



Actual Image



Actual Image

Experience excellence in education with Pride World School, a premier institution fostering holistic growth and academic excellence. With award-winning faculty, state-of-the-art infrastructure, and an innovative curriculum, introduce your children to a world of holistic education.



Club at Avenue 07- Artistic Impression

Elite Haven

The Club at Avenue 07 is a modern architectural marvel, blending opulence and sophistication in every corner. It features a stunning 3-floor-high waterfall cascading down the left sidewall, creating a serene and ambient atmosphere. Spanning across seven floors—including the Basements, Mezzanine, Stilt, and four additional levels—this luxurious destination offers a perfect fusion of elegance and functionality. Whether you're here for a high-energy event or a relaxing evening, it promises an unparalleled experience in a setting that is as breathtaking as it is exclusive.

Aqua Bliss

Dive into unparalleled luxury at the Swimming Pool at The Club of Avenue 07. Designed to perfection, this sparkling oasis offers a serene escape from the everyday. Whether you're perfecting your freestyle in the lap lanes, basking under the sun in the deck area, or enjoying the pristine ambiance, every moment here is pure indulgence. The pool's temperature-controlled waters ensure year-round comfort, while its chic design adds a touch of sophistication. With poolside loungers and attentive service, it's more than just a swim; it's an experience. Discover your haven of tranquility and vitality, where elegance meets recreation.



Unexpectedly Vibrant

Embrace the energy of community gatherings and cultural events at the amphitheatre or club house, a vibrant hub for outdoor activities within the society. Whether it's a live performance, a movie night under the stars, or a yoga session at dawn, seize the opportunity to connect with your neighbours and the community.



Actual Images of Avenue 01- Club House





Party Area- Indicative Image



Table Tennis- Actual Image



Foosball & Air Hockey- Actual Image



Gym- Actual Image



Billiards - Actual Image





Yoga Area - Indicative Image



Open Gym- Artistic Impression



Multi Sports Area- - Artistic Impression

Specification For Supreme and Premium Plus

FLOORING



- Living / Dining Room / Bed Room: Designer Vitrified Floor Tiles, Granite stone on window sill.
- Kitchen: Designer Vitrified Tiles, Granite Counter
- Toilet: Anti-skid ceramic Tile, Granite Stone on counter, ledge walls, window sills.
- Balcony: Anti-skid Ceramic Tiles, Partially Artificial Grass Turf
- Nanni's Room: Vitrified Tile
- Staircase: Stone / Tile Flooring

WALL FINISH



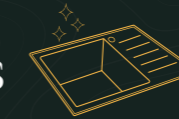
- Living / Dining Room / Bed Room: Acrylic Emulsion paint with Putty Base
- Kitchen: Designer Tiles height upto 2' above working counter, Balance Area OBD
- Toilet: Ceramic Tiles upto False Ceiling Height all around
- Balcony / Deck: Weather Proof Paint / Texture Paint
- Nanni's Room: OBD
- Staircase: OBD

DOORS & WINDOW



- Main Door: Polished Hard wood door frame with designer laminated flush door shutter.
- Internal Doors: Polished Hard wood door frame with designer laminated flush door shutter.
- External Door & Window: Powder coated Aluminium Door & Window

FITTING & FIXTURES



- Kitchen: Stainless Steel Sink.
- Toilet: Branded sanitary / Chinaware / CP fixtures.
- Premium brand of Modular Switches, Switch Plates & branded Copper Wire.

RAILING



- Balcony /Utility: Stainless Steel Glass Fitted Railing
- Staircase: M.S Tube / Solid Bar Railing

CEILING FINISH



- Living / Dining Room / Bed Room: OBD with Putty Base
- Kitchen: OBD
- Toilet: Grid False ceiling
- Balcony / Deck: Weather Proof paint
- Nanni's Room: OBD
- Staircase: OBD

EXTERNAL WALL FINISH



- Weather Proof Paint / Texture Paint

Smart Future Ready- Lifestyle Homes...



Actual Image

...with environmentally sustainable features.

Embrace eco-friendly living with sustainable design and renewable energy initiatives, ensuring a harmonious blend of luxury and responsibility. Avenue 07 buildings are designed following the latest eco-friendly methods, creating a community that values and respects the environment.



Front Landscape
Activity Garden



Grand Entrance Lobby



High Speed Lift



Two Level covered
Car Parking



Earthquake Resistant
RCC Framed structure.



DG Power Backup with suitable
diversity and load Factor.



Solid waste
management system



Advance Fire
safety standards.



Rain water harvesting system to recharge
aquifer and uses of treated water from STP for
flushing and Horticulture.



Fiber to Home (FTTH) –
For Internet, TV & Telephone.

A Proven Track Record In Odisha



Actual Site Images



Setting an unmatched benchmark in the residential sector of Odisha. Assotech Cosmopolis, in the heart of Bhubaneswar, launched in 2009 and delivered well on time in 2012 was literally an instant success! Spread over 12 acres of pristine, sprawling land comprising 845 exclusive apartments on extensive built-up space across acres of rolling greenery, has been the epitome of design and architectural finesse. A first in Bhubaneswar and sold out within months of its launch, the Assotech Cosmopolis offered a choice of spacious 4 BHK, 3 BHK, 2 BHK, and Super-hit Stella apartments.